

## Anti-CSTF2 antibody (11-60 aa) (STJ92510)

### GENERAL INFORMATION

Product Type	Primary antibodies
Applications	WB/IHC/IF/ELISA
Host / Source	Rabbit
Reactivity	Human/Mouse

### PRODUCT PROPERTIES

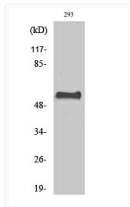
Clonality	Polyclonal
Concentration	1 mg/mL
Conjugation	Unconjugated
Purification	The antibody was affinity-purified from rabbit antiserum by affinity-chromatography using epitope-specific immunogen.
Dilution Range	WB 1:500-1:2000 IHC 1:100-1:300 IF 1:200-1:1000 ELISA 1:5000
Formulation	Liquid in PBS containing 50% Glycerol, 0.5% BSA and 0.02% Sodium Azide.
Isotype	IgG
Molecular Weight	Observed: 60kD
Storage Instruction	Store at -20°C for up to 1 year from the date of receipt, and avoid repeat freeze-thaw cycles.

### TARGET INFORMATION

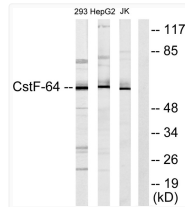
Gene ID	<a href="#">1478</a>
Gene Symbol	<a href="#">CSTF2</a>
UniProt ID	<a href="#">CSTF2_HUMAN</a>
Immunogen Region	11-60 aa
Specificity	CstF-64 Polyclonal Antibody detects endogenous levels of CstF-64 protein.

### ADDITIONAL INFORMATION

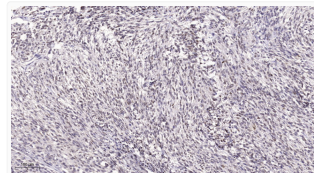
Note: STRICTLY FOR FURTHER SCIENTIFIC RESEARCH USE ONLY (RUO). MUST NOT TO BE USED IN DIAGNOSTIC OR THERAPEUTIC APPLICATIONS.



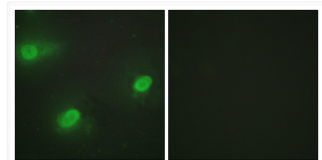
Western blot analysis of various cells using CstF-64 Polyclonal Antibody diluted at 1:1000; cells nucleus extracted by STJ92510



Western blot analysis of lysates from 293, K562, and Jurkat cells, using CSTF2 Antibody. The lane on the right is STJ92510



Immunohistochemical analysis of paraffin-embedded human small intestinal stromal tumor. 1, Tris-EDTA, pH 9.0 was used STJ92510



Immunofluorescence analysis of HeLa cells using CSTF2 Antibody. The picture on the right is blocked with the STJ92510