

## Anti-PLA2G4C antibody (301-350 aa) (STJ92450)

### GENERAL INFORMATION

Product Type	Primary antibodies
Applications	WB/ELISA
Host / Source	Rabbit
Reactivity	Human/Rat/Mouse

### PRODUCT PROPERTIES

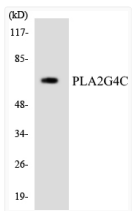
Clonality	Polyclonal
Concentration	1 mg/mL
Conjugation	Unconjugated
Purification	The antibody was affinity-purified from rabbit antiserum by affinity-chromatography using epitope-specific immunogen.
Dilution Range	WB 1:500-1:2000 ELISA 1:20000
Formulation	Liquid in PBS containing 50% Glycerol, 0.5% BSA and 0.02% Sodium Azide.
Isotype	IgG
Molecular Weight	Observed: 70kD
Storage Instruction	Store at -20°C for up to 1 year from the date of receipt, and avoid repeat freeze-thaw cycles.

### TARGET INFORMATION

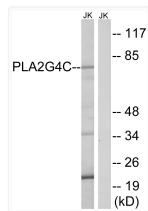
Gene ID	<a href="#">8605</a>
Gene Symbol	<a href="#">PLA2G4C</a>
UniProt ID	<a href="#">PA24C_HUMAN</a>
Immunogen Region	301-350 aa
Specificity	cPLA2-Gamma Polyclonal Antibody detects endogenous levels of cPLA2-Gamma protein.

### ADDITIONAL INFORMATION

Note **STRICTLY FOR FURTHER SCIENTIFIC RESEARCH USE ONLY (RUO). MUST NOT TO BE USED IN DIAGNOSTIC OR THERAPEUTIC APPLICATIONS.**



Western blot analysis of the lysates from HeLa cells using PLA2G4C antibody.



Western blot analysis of lysates from Jurkat cells, using PLA2G4C Antibody. The lane on the right is blocked with the synthesized peptide.