

Anti-GJC1 antibody (231-280 aa) (STJ92412)

GENERAL INFORMATION

Product Type	Primary antibodies
Applications	WB/ELISA
Host / Source	Rabbit
Reactivity	Human/Mouse/Rat

PRODUCT PROPERTIES

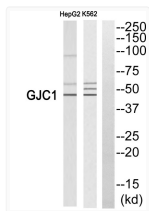
Clonality	Polyclonal
Concentration	1 mg/mL
Conjugation	Unconjugated
Purification	The antibody was affinity-purified from rabbit antiserum by affinity-chromatography using epitope-specific immunogen.
Dilution Range	WB 1:500-1:2000 ELISA 1:40000
Formulation	Liquid in PBS containing 50% Glycerol, 0.5% BSA and 0.02% Sodium Azide.
Isotype	IgG
Molecular Weight	Observed: 45kD
Storage Instruction	Store at -20°C for up to 1 year from the date of receipt, and avoid repeat freeze-thaw cycles.

TARGET INFORMATION

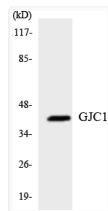
Gene ID	10052
Gene Symbol	GJC1
UniProt ID	CXG1_HUMAN
Immunogen Region	231-280 aa
Specificity	Connexin 45 Polyclonal Antibody detects endogenous levels of Connexin 45 protein.

ADDITIONAL INFORMATION

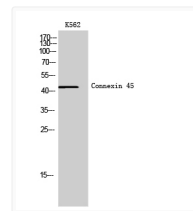
Note **STRICTLY FOR FURTHER SCIENTIFIC RESEARCH USE ONLY (RUO). MUST NOT TO BE USED IN DIAGNOSTIC OR THERAPEUTIC APPLICATIONS.**



Western blot analysis of GJC1 Antibody. The lane on the right is blocked with the GJC1 peptide.



Western blot analysis of the lysates from K562 cells using GJC1 antibody.



Western blot analysis of K562 cells using Connexin 45 Polyclonal Antibody