

Anti-COL6A1 antibody (191-240 aa) (STJ92399)

GENERAL INFORMATION

Product Type	Primary antibodies
Applications	IHC/IF/ELISA
Host / Source	Rabbit
Reactivity	Human/Mouse

PRODUCT PROPERTIES

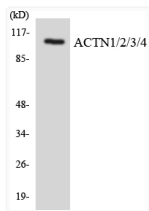
Clonality	Polyclonal
Concentration	1 mg/mL
Conjugation	Unconjugated
Purification	The antibody was affinity-purified from rabbit antiserum by affinity-chromatography using epitope-specific immunogen.
Dilution Range	IHC 1:100-1:300 ELISA 1:10000 IF 1:50-200
Formulation	Liquid in PBS containing 50% Glycerol, 0.5% BSA and 0.02% Sodium Azide.
Isotype	IgG
Molecular Weight	Calculated: 109kD
Storage Instruction	Store at -20°C for up to 1 year from the date of receipt, and avoid repeat freeze-thaw cycles.

TARGET INFORMATION

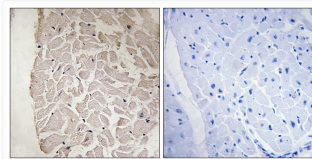
Gene ID	1291
Gene Symbol	COL6A1
UniProt ID	CO6A1_HUMAN
Immunogen Region	191-240 aa
Specificity	COL6A1 Polyclonal Antibody detects endogenous levels of COL6A1 protein.

ADDITIONAL INFORMATION

Note **STRICTLY FOR FURTHER SCIENTIFIC RESEARCH USE ONLY (RUO). MUST NOT TO BE USED IN DIAGNOSTIC OR THERAPEUTIC APPLICATIONS.**



Western blot analysis of the lysates from COLO205 cells using ACTN1/2/3/4 antibody.



Immunohistochemistry analysis of paraffin-embedded human heart tissue, using Collagen VI alpha1 Antibody. The picture on the right is blocked with the synthesized peptide.