

Anti-COL5A3 antibody (221-270 aa) (STJ92398)

GENERAL INFORMATION

Product Type	Primary antibodies
Applications	WB/IHC/IF/ELISA
Host / Source	Rabbit
Reactivity	Human/Rat/Mouse

PRODUCT PROPERTIES

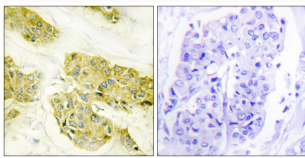
Clonality	Polyclonal
Concentration	1 mg/mL
Conjugation	Unconjugated
Purification	The antibody was affinity-purified from rabbit antiserum by affinity-chromatography using epitope-specific immunogen.
Dilution Range	WB 1:500-1:2000 IHC 1:100-1:300 IF 1:200-1:1000 ELISA 1:20000
Formulation	Liquid in PBS containing 50% Glycerol, 0.5% BSA and 0.02% Sodium Azide.
Isotype	IgG
Molecular Weight	Observed: 170kD
Storage Instruction	Store at -20°C for up to 1 year from the date of receipt, and avoid repeat freeze-thaw cycles.

TARGET INFORMATION

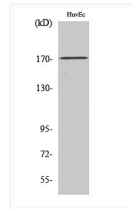
Gene ID	50509
Gene Symbol	COL5A3
UniProt ID	CO5A3_HUMAN
Immunogen Region	221-270 aa
Specificity	COL5A3 Polyclonal Antibody detects endogenous levels of COL5A3 protein.

ADDITIONAL INFORMATION

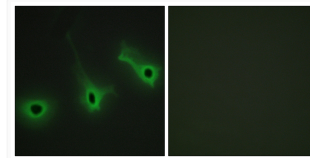
Note **STRICTLY FOR FURTHER SCIENTIFIC RESEARCH USE ONLY (RUO). MUST NOT TO BE USED IN DIAGNOSTIC OR THERAPEUTIC APPLICATIONS.**



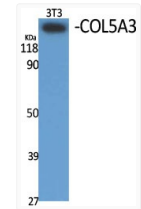
Immunohistochemistry analysis of paraffin-embedded human breast carcinoma tissue, using Collagen V alpha3 Antibody. The picture on the right is blocked with the synthesized peptide.



Western blot analysis of K562 cells using COL5A3 Polyclonal Antibody



Immunofluorescence analysis of HeLa cells, using Collagen V alpha3 Antibody. The picture on the right is blocked with the synthesized peptide.



Western blot analysis of various cells using COL5A3 Polyclonal Antibody