

Anti-COL4A2 antibody (151-200 aa) (STJ92390)

GENERAL INFORMATION

Product Type	Primary antibodies
Applications	WB/IHC/IF/ELISA
Host / Source	Rabbit
Reactivity	Human/Mouse

PRODUCT PROPERTIES

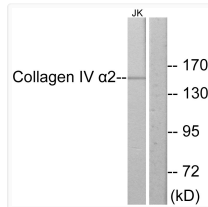
Clonality	Polyclonal
Concentration	1 mg/mL
Conjugation	Unconjugated
Purification	The antibody was affinity-purified from rabbit antiserum by affinity-chromatography using epitope-specific immunogen.
Dilution Range	WB 1:500-1:2000 IHC 1:100-1:300 IF 1:200-1:1000 ELISA 1:20000
Formulation	Liquid in PBS containing 50% Glycerol, 0.5% BSA and 0.02% Sodium Azide.
Isotype	IgG
Molecular Weight	Observed: 150kD
Storage Instruction	Store at -20°C for up to 1 year from the date of receipt, and avoid repeat freeze-thaw cycles.

TARGET INFORMATION

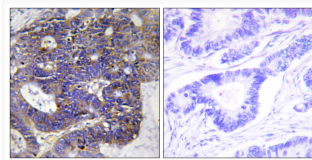
Gene ID	1284
Gene Symbol	COL4A2
UniProt ID	CO4A2_HUMAN
Immunogen Region	151-200 aa
Specificity	COL4A2 Polyclonal Antibody detects endogenous levels of COL4A2 protein.

ADDITIONAL INFORMATION

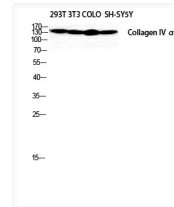
Note STRICTLY FOR FURTHER SCIENTIFIC RESEARCH USE ONLY (RUO). MUST NOT TO BE USED IN DIAGNOSTIC OR THERAPEUTIC APPLICATIONS.



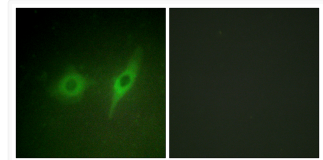
Western blot analysis of lysates from Jurkat cells, using Collagen IV alpha2 Antibody. The lane on the right is blocked with the synthesized peptide.



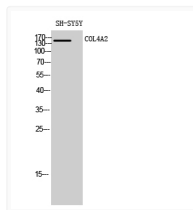
Immunohistochemistry analysis of paraffin-embedded human colon carcinoma tissue, using Collagen IV alpha2 Antibody. The picture on the right is blocked with the synthesized peptide.



Western blot analysis of SH-SY5Y 293T NIH-3T3 COLO cells using COL4A2 Polyclonal Antibody diluted at 1 : 2000



Immunofluorescence analysis of HeLa cells, using Collagen IV alpha2 Antibody. The picture on the right is blocked with the synthesized peptide.



Western blot analysis of SH-SY5Y cells using COL4A2 Polyclonal Antibody diluted at 1 : 2000