

Anti-COL11A1 antibody (581-630 aa) (STJ92373)

GENERAL INFORMATION

Product Type	Primary antibodies
Applications	WB/IHC/IF/ELISA
Host / Source	Rabbit
Reactivity	Human/Mouse

PRODUCT PROPERTIES

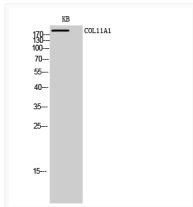
Clonality	Polyclonal
Concentration	1 mg/mL
Conjugation	Unconjugated
Purification	The antibody was affinity-purified from rabbit antiserum by affinity-chromatography using epitope-specific immunogen.
Dilution Range	WB 1:500-1:2000 IHC-P 1:100-300 ELISA 1:20000 IF 1:100-300
Formulation	Liquid in PBS containing 50% Glycerol, 0.5% BSA and 0.02% Sodium Azide.
Isotype	IgG
Molecular Weight	Observed: 181kD
Storage Instruction	Store at -20°C for up to 1 year from the date of receipt, and avoid repeat freeze-thaw cycles.

TARGET INFORMATION

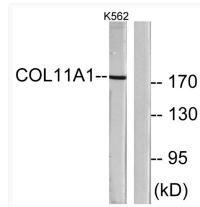
Gene ID	1301
Gene Symbol	COL11A1
UniProt ID	COBA1_HUMAN
Immunogen Region	581-630 aa
Specificity	COL11A1 Polyclonal Antibody detects endogenous levels of COL11A1 protein.

ADDITIONAL INFORMATION

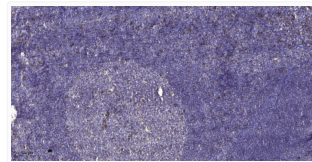
Note STRICTLY FOR FURTHER SCIENTIFIC RESEARCH USE ONLY (RUO). MUST NOT TO BE USED IN DIAGNOSTIC OR THERAPEUTIC APPLICATIONS.



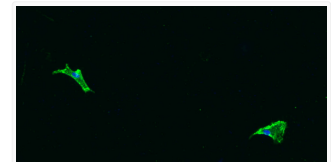
Western blot analysis of KB cells using COL11A1 polyclonal antibody diluted at 1:1000 STJ92373



Western blot analysis of lysates from K562 cells, using Collagen XI alpha1 Antibody. The lane on the right was blocked STJ92373



Immunohistochemical analysis of paraffin-embedded human tonsil. 1, Antibody was diluted at 1:200 (4° overnight). 2, STJ92373



Immunofluorescence analysis of A549. 1, primary antibody was diluted at 1:200 (4°C overnight). 2, Goat Anti Rabbit IgG STJ92373