

Anti-CNP antibody (59-108 aa) (STJ92368)

GENERAL INFORMATION

Product Type	Primary antibodies
Applications	WB/IHC/IF/ELISA
Host / Source	Rabbit
Reactivity	Human/Mouse/Rat

PRODUCT PROPERTIES

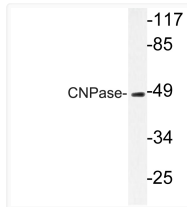
Clonality	Polyclonal
Concentration	1 mg/mL
Conjugation	Unconjugated
Purification	The antibody was affinity-purified from rabbit antiserum by affinity-chromatography using epitope-specific immunogen.
Dilution Range	WB 1:500-1:2000 IHC 1:100-1:300 ELISA 1:40000 IF 1:50-200
Formulation	Liquid in PBS containing 50% Glycerol, 0.5% BSA and 0.02% Sodium Azide.
Isotype	IgG
Molecular Weight	Observed: 47kD
Storage Instruction	Store at -20°C for up to 1 year from the date of receipt, and avoid repeat freeze-thaw cycles.

TARGET INFORMATION

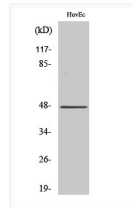
Gene ID	1267
Gene Symbol	CNP
UniProt ID	CN37_HUMAN
Immunogen Region	59-108 aa
Specificity	CNPase Polyclonal Antibody detects endogenous levels of CNPase protein.

ADDITIONAL INFORMATION

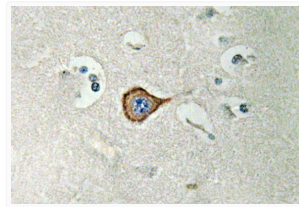
Note STRICTLY FOR FURTHER SCIENTIFIC RESEARCH USE ONLY (RUO). MUST NOT TO BE USED IN DIAGNOSTIC OR THERAPEUTIC APPLICATIONS.



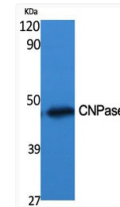
Western blot analysis of lysate from HUVEC cells, using CNPase antibody.



Western blot analysis of MCF7 cells using CNPase Polyclonal Antibody diluted at 1: 500



Immunohistochemistry analysis of CNPase antibody in paraffin-embedded human brain tissue.



Western blot analysis of various cells using CNPase Polyclonal Antibody diluted at 1: 500