

Anti-CNGA1 antibody (401-450 aa) (STJ92360)

GENERAL INFORMATION

Product Type	Primary antibodies
Applications	WB/ELISA
Host / Source	Rabbit
Reactivity	Human/Mouse/Rat

PRODUCT PROPERTIES

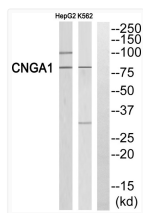
Clonality	Polyclonal
Concentration	1 mg/mL
Conjugation	Unconjugated
Purification	The antibody was affinity-purified from rabbit antiserum by affinity-chromatography using epitope-specific immunogen.
Dilution Range	WB 1:500-1:2000 ELISA 1:40000
Formulation	Liquid in PBS containing 50% Glycerol, 0.5% BSA and 0.02% Sodium Azide.
Isotype	IgG
Molecular Weight	Observed: 80kD
Storage Instruction	Store at -20°C for up to 1 year from the date of receipt, and avoid repeat freeze-thaw cycles.

TARGET INFORMATION

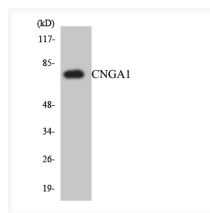
Gene ID	1259
Gene Symbol	CNGA1
UniProt ID	CNGA1_HUMAN
Immunogen Region	401-450 aa
Specificity	CNG-1 Polyclonal Antibody detects endogenous levels of CNG-1 protein.

ADDITIONAL INFORMATION

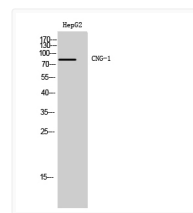
Note **STRICTLY FOR FURTHER SCIENTIFIC RESEARCH USE ONLY (RUO). MUST NOT TO BE USED IN DIAGNOSTIC OR THERAPEUTIC APPLICATIONS.**



Western blot analysis of CNGA1 Antibody. The lane on the right is blocked with the CNGA1 peptide.



Western blot analysis of the lysates from HepG2 cells using CNGA1 antibody.



Western blot analysis of HepG2 cells using CNG-1 Polyclonal Antibody