

Anti-CMTM4 antibody (161-210 aa) (STJ92351)

GENERAL INFORMATION

Product Type	Primary antibodies
Applications	WB/IHC/IF/ELISA
Host / Source	Rabbit
Reactivity	Human/Mouse

PRODUCT PROPERTIES

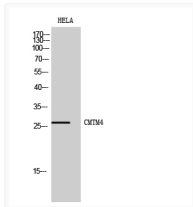
Clonality	Polyclonal
Concentration	1 mg/mL
Conjugation	Unconjugated
Purification	The antibody was affinity-purified from rabbit antiserum by affinity-chromatography using epitope-specific immunogen.
Dilution Range	WB 1:500-1:2000 IHC-P 1:100-300 ELISA 1:20000 IF 1:100-300
Formulation	Liquid in PBS containing 50% Glycerol, 0.5% BSA and 0.02% Sodium Azide.
Isotype	IgG
Molecular Weight	Observed: 26kD
Storage Instruction	Store at -20°C for up to 1 year from the date of receipt, and avoid repeat freeze-thaw cycles.

TARGET INFORMATION

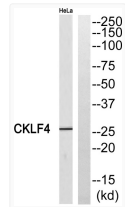
Gene ID	146223
Gene Symbol	CMTM4
UniProt ID	CKLF4_HUMAN
Immunogen Region	161-210 aa
Specificity	CMTM4 Polyclonal Antibody detects endogenous levels of CMTM4 protein.

ADDITIONAL INFORMATION

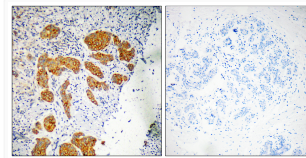
Note STRICTLY FOR FURTHER SCIENTIFIC RESEARCH USE ONLY (RUO). MUST NOT TO BE USED IN DIAGNOSTIC OR THERAPEUTIC APPLICATIONS.



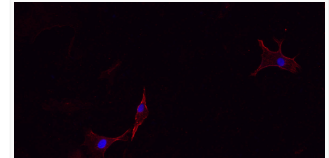
Western Blot analysis of HeLa cells using CMTM4 Polyclonal Antibody STJ92351



Western blot analysis of CKLF4 Antibody. The lane on the right is blocked with the CKLF4 peptide. STJ92351



Immunohistochemistry analysis of paraffin-embedded human breast carcinoma, using CKLF4 Antibody. The lane on the right STJ92351



Immunofluorescence analysis of A549. 1, primary antibody (red) was diluted at 1:200 (4°C overnight). 2, Goat Anti Rabbit STJ92351