

## Anti-PPT1 antibody (16-65 aa) (STJ92340)

### GENERAL INFORMATION

Product Type	Primary antibodies
Applications	IHC/IF/ELISA
Host / Source	Rabbit
Reactivity	Human/Mouse/Rat

### PRODUCT PROPERTIES

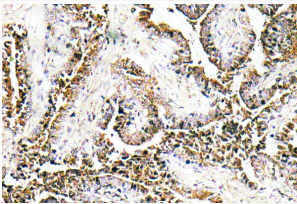
Clonality	Polyclonal
Concentration	1 mg/mL
Conjugation	Unconjugated
Purification	The antibody was affinity-purified from rabbit antiserum by affinity-chromatography using epitope-specific immunogen.
Dilution Range	IHC 1:100-1:300 ELISA 1:10000 IF 1:50-200
Formulation	Liquid in PBS containing 50% Glycerol, 0.5% BSA and 0.02% Sodium Azide.
Isotype	IgG
Molecular Weight	Observed: 37kD
Storage Instruction	Store at -20°C for up to 1 year from the date of receipt, and avoid repeat freeze-thaw cycles.

### TARGET INFORMATION

Gene ID	<a href="#">5538</a>
Gene Symbol	<a href="#">PPT1</a>
UniProt ID	<a href="#">PPT1_HUMAN</a>
Immunogen Region	16-65 aa
Specificity	CLN1 Polyclonal Antibody detects endogenous levels of CLN1 protein.

### ADDITIONAL INFORMATION

Note STRICTLY FOR FURTHER SCIENTIFIC RESEARCH USE ONLY (RUO). MUST NOT TO BE USED IN DIAGNOSTIC OR THERAPEUTIC APPLICATIONS.



Immunohistochemistry analysis of CLN1 antibody in paraffin-embedded human prostate carcinoma tissue.