

Anti-CLIP3 antibody (361-410 aa) (STJ92334)

GENERAL INFORMATION

Product Type	Primary antibodies
Applications	WB/IHC/IF/ELISA
Host / Source	Rabbit
Reactivity	Human/Mouse/Rat

PRODUCT PROPERTIES

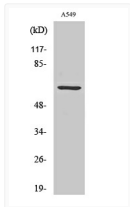
Clonality	Polyclonal
Concentration	1 mg/mL
Conjugation	Unconjugated
Purification	The antibody was affinity-purified from rabbit antiserum by affinity-chromatography using epitope-specific immunogen.
Dilution Range	WB 1:500-1:2000 IHC 1:100-1:300 IF 1:200-1:1000 ELISA 1:40000
Formulation	Liquid in PBS containing 50% Glycerol, 0.5% BSA and 0.02% Sodium Azide.
Isotype	IgG
Molecular Weight	Observed: 60kD
Storage Instruction	Store at -20°C for up to 1 year from the date of receipt, and avoid repeat freeze-thaw cycles.

TARGET INFORMATION

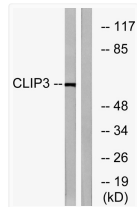
Gene ID	25999
Gene Symbol	CLIP3
UniProt ID	CLIP3_HUMAN
Immunogen Region	361-410 aa
Specificity	CLIP3 Polyclonal Antibody detects endogenous levels of CLIP3 protein.

ADDITIONAL INFORMATION

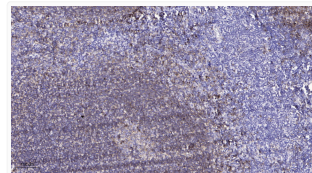
Note STRICTLY FOR FURTHER SCIENTIFIC RESEARCH USE ONLY (RUO). MUST NOT TO BE USED IN DIAGNOSTIC OR THERAPEUTIC APPLICATIONS.



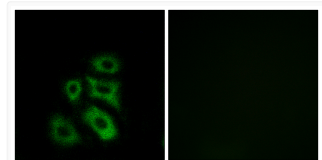
Western blot analysis of various cells using CLIP3 polyclonal antibody STJ92334



Western blot analysis of lysates from A549 cells, using CLIP3 Antibody. The lane on the right is blocked with the STJ92334



Immunohistochemical analysis of paraffin-embedded human tonsil. 1, Antibody was diluted at 1:200 (4° overnight). 2, STJ92334



Immunofluorescence analysis of A549 cells using CLIP3 Antibody. The picture on the right is blocked with the STJ92334