

Anti-CLIP1 antibody (1291-1340 aa) (STJ92333)

GENERAL INFORMATION

Product Type	Primary antibodies
Applications	WB/ELISA
Host / Source	Rabbit
Reactivity	Human/Mouse/Rat

PRODUCT PROPERTIES

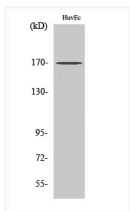
Clonality	Polyclonal
Concentration	1 mg/mL
Conjugation	Unconjugated
Purification	The antibody was affinity-purified from rabbit antiserum by affinity-chromatography using epitope-specific immunogen.
Dilution Range	WB 1:500-1:2000 ELISA 1:20000
Formulation	Liquid in PBS containing 50% Glycerol, 0.5% BSA and 0.02% Sodium Azide.
Isotype	IgG
Molecular Weight	Observed: 161kD
Storage Instruction	Store at -20°C for up to 1 year from the date of receipt, and avoid repeat freeze-thaw cycles.

TARGET INFORMATION

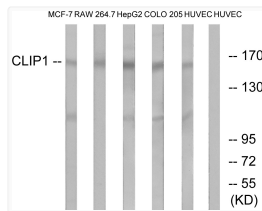
Gene ID	6249
Gene Symbol	CLIP1
UniProt ID	CLIP1_HUMAN
Immunogen Region	1291-1340 aa
Specificity	CLIP-170 Polyclonal Antibody detects endogenous levels of CLIP-170 protein.

ADDITIONAL INFORMATION

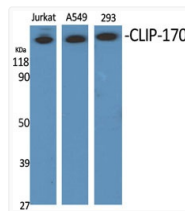
Note **STRICTLY FOR FURTHER SCIENTIFIC RESEARCH USE ONLY (RUO). MUST NOT TO BE USED IN DIAGNOSTIC OR THERAPEUTIC APPLICATIONS.**



Western blot analysis of RAW264.7 cells using CLIP-170 Polyclonal Antibody



Western blot analysis of lysates from HUVEC, COLO, MCF-7, HepG2, and RAW264.7 cells, using CLIP1 Antibody. The lane on the right is blocked with the synthesized peptide.



Western blot analysis of various cells using CLIP-170 Polyclonal Antibody