

Anti-CLDN19 antibody (81-130 aa) (STJ92311)

GENERAL INFORMATION

Product Type	Primary antibodies
Applications	WB/ELISA
Host / Source	Rabbit
Reactivity	Human/Rat

PRODUCT PROPERTIES

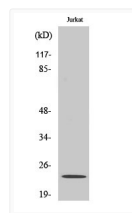
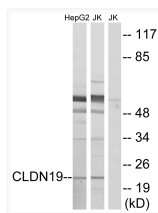
Clonality	Polyclonal
Concentration	1 mg/mL
Conjugation	Unconjugated
Purification	The antibody was affinity-purified from rabbit antiserum by affinity-chromatography using epitope-specific immunogen.
Dilution Range	WB 1:500-1:2000 ELISA 1:10000
Formulation	Liquid in PBS containing 50% Glycerol, 0.5% BSA and 0.02% Sodium Azide.
Isotype	IgG
Molecular Weight	Observed: 23kD
Storage Instruction	Store at -20°C for up to 1 year from the date of receipt, and avoid repeat freeze-thaw cycles.

TARGET INFORMATION

Gene ID	149461
Gene Symbol	CLDN19
UniProt ID	CLD19_HUMAN
Immunogen Region	81-130 aa
Specificity	Claudin-19 Polyclonal Antibody detects endogenous levels of Claudin-19 protein.

ADDITIONAL INFORMATION

Note **STRICTLY FOR FURTHER SCIENTIFIC RESEARCH USE ONLY (RUO). MUST NOT TO BE USED IN DIAGNOSTIC OR THERAPEUTIC APPLICATIONS.**



Western blot analysis of lysates from Jurkat and HepG2 cells, using CLDN19 Antibody. The lane on the right is blocked with the synthesized peptide.

Western blot analysis of various cells using Claudin-19 Polyclonal Antibody diluted at 1: 500