

Anti-CHPF antibody (631-680 aa) (STJ92289)

GENERAL INFORMATION

Product Type	Primary antibodies
Applications	WB/IHC/IF/ELISA
Host / Source	Rabbit
Reactivity	Human/Mouse/Rat

PRODUCT PROPERTIES

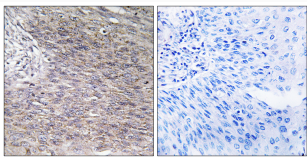
Clonality	Polyclonal
Concentration	1 mg/mL
Conjugation	Unconjugated
Purification	The antibody was affinity-purified from rabbit antiserum by affinity-chromatography using epitope-specific immunogen.
Dilution Range	WB 1:500-1:2000 IHC 1:100-1:300 IF 1:200-1:1000 ELISA 1:40000
Formulation	Liquid in PBS containing 50% Glycerol, 0.5% BSA and 0.02% Sodium Azide.
Isotype	IgG
Molecular Weight	Observed: 85kD
Storage Instruction	Store at -20°C for up to 1 year from the date of receipt, and avoid repeat freeze-thaw cycles.

TARGET INFORMATION

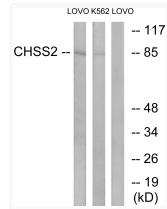
Gene ID	79586
Gene Symbol	CHPF
UniProt ID	CHSS2_HUMAN
Immunogen Region	631-680 aa
Specificity	CHSY2 Polyclonal Antibody detects endogenous levels of CHSY2 protein.

ADDITIONAL INFORMATION

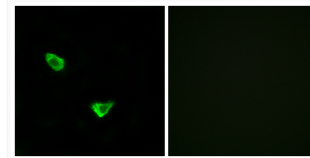
Note **STRICTLY FOR FURTHER SCIENTIFIC RESEARCH USE ONLY (RUO). MUST NOT TO BE USED IN DIAGNOSTIC OR THERAPEUTIC APPLICATIONS.**



Immunohistochemistry analysis of paraffin-embedded human cervix carcinoma tissue, using CHSY2 Antibody. The picture on the right is blocked with the synthesized peptide.



Western blot analysis of lysates from LOVO and K562 cells, using CHSY2 Antibody. The lane on the right is blocked with the synthesized peptide.



Immunofluorescence analysis of MCF7 cells, using CHSY2 Antibody. The picture on the right is blocked with the synthesized peptide.