

Anti-DDIT3 antibody (15-64 aa) (STJ92277)

GENERAL INFORMATION

Product Type	Primary antibodies
Applications	WB/IHC/IF/ELISA
Host / Source	Rabbit
Reactivity	Human/Mouse

PRODUCT PROPERTIES

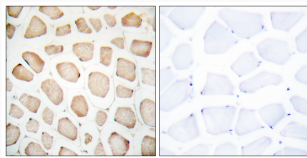
Clonality	Polyclonal
Concentration	1 mg/mL
Conjugation	Unconjugated
Purification	The antibody was affinity-purified from rabbit antiserum by affinity-chromatography using epitope-specific immunogen.
Dilution Range	WB 1:500-1:2000 IHC 1:100-1:300 IF 1:200-1:1000 ELISA 1:5000
Formulation	Liquid in PBS containing 50% Glycerol, 0.5% BSA and 0.02% Sodium Azide.
Isotype	IgG
Molecular Weight	Observed: 19kD
Storage Instruction	Store at -20°C for up to 1 year from the date of receipt, and avoid repeat freeze-thaw cycles.

TARGET INFORMATION

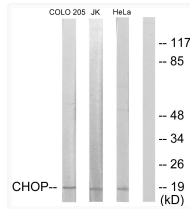
Gene ID	1649
Gene Symbol	DDIT3
UniProt ID	DDIT3_HUMAN
Immunogen Region	15-64 aa
Specificity	CHOP Polyclonal Antibody detects endogenous levels of CHOP protein.

ADDITIONAL INFORMATION

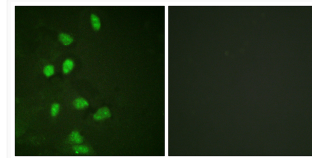
Note STRICTLY FOR FURTHER SCIENTIFIC RESEARCH USE ONLY (RUO). MUST NOT TO BE USED IN DIAGNOSTIC OR THERAPEUTIC APPLICATIONS.



Immunohistochemistry analysis of paraffin-embedded human skeletal muscle tissue, using CHOP Antibody. The picture on the right is blocked with the synthesized peptide.



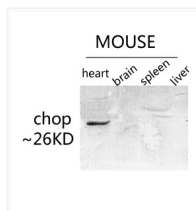
Western blot analysis of lysates from HeLa, Jurkat, and COLO205 cells, using CHOP Antibody. The lane on the right is blocked with the synthesized peptide.



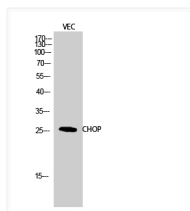
Immunofluorescence analysis of HeLa cells, using CHOP Antibody. The picture on the right is blocked with the synthesized peptide.



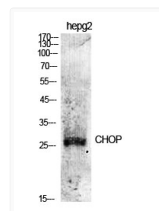
Western blot analysis of various lysis using CHOP Polyclonal Antibody diluted at 1 : 500. Secondary antibody was diluted at 1:20000



Western blot analysis of various lysis using CHOP Polyclonal Antibody diluted at 1 : 500. Secondary antibody was diluted at 1:20000



Western blot analysis of VEC cells using CHOP Polyclonal Antibody diluted at 1 : 500



Western blot analysis of various cells using CHOP Polyclonal Antibody diluted at 1 : 500