

Anti-CHKB antibody (301-350 aa) (STJ92275)

GENERAL INFORMATION

Product Type	Primary antibodies
Applications	WB/IHC/IF/ELISA
Host / Source	Rabbit
Reactivity	Human/Rat/Mouse

PRODUCT PROPERTIES

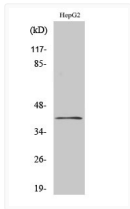
Clonality	Polyclonal
Concentration	1 mg/mL
Conjugation	Unconjugated
Purification	The antibody was affinity-purified from rabbit antiserum by affinity-chromatography using epitope-specific immunogen.
Dilution Range	WB 1:500-1:2000 IHC 1:100-1:300 ELISA 1:20000 IF 1:50-200
Formulation	Liquid in PBS containing 50% Glycerol, 0.5% BSA and 0.02% Sodium Azide.
Isotype	IgG
Molecular Weight	Observed: 45kD
Storage Instruction	Store at -20°C for up to 1 year from the date of receipt, and avoid repeat freeze-thaw cycles.

TARGET INFORMATION

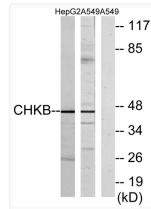
Gene ID	1120
Gene Symbol	CHKB
UniProt ID	CHKB_HUMAN
Immunogen Region	301-350 aa
Specificity	ChoKB Polyclonal Antibody detects endogenous levels of ChoKB protein.

ADDITIONAL INFORMATION

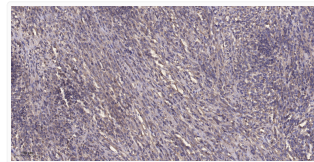
Note STRICTLY FOR FURTHER SCIENTIFIC RESEARCH USE ONLY (RUO). MUST NOT TO BE USED IN DIAGNOSTIC OR THERAPEUTIC APPLICATIONS.



Western blot analysis of various cells using ChoKB Polyclonal Antibody STJ92275



Western blot analysis of lysates from HepG2 and A549 cells, using CHKB Antibody. The lane on the right was blocked with STJ92275



Immunohistochemical analysis of paraffin-embedded human colon cancer. 1, Antibody was diluted at 1:200 (4° overnight). STJ92275