

## Anti-CMKLR1 antibody (221-270 aa) (STJ92262)

### GENERAL INFORMATION

Product Type	Primary antibodies
Applications	WB/IHC/IF/ELISA
Host / Source	Rabbit
Reactivity	Human/Mouse/Rat

### PRODUCT PROPERTIES

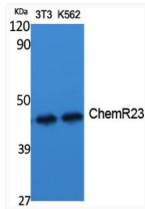
Clonality	Polyclonal
Concentration	1 mg/mL
Conjugation	Unconjugated
Purification	The antibody was affinity-purified from rabbit antiserum by affinity-chromatography using epitope-specific immunogen.
Dilution Range	WB 1:500-1:2000 IHC-P 1:100-300 ELISA 1:20000 IF 1:100-300
Formulation	Liquid in PBS containing 50% Glycerol, 0.5% BSA and 0.02% Sodium Azide.
Isotype	IgG
Molecular Weight	Observed: 42kD
Storage Instruction	Store at -20°C for up to 1 year from the date of receipt, and avoid repeat freeze-thaw cycles.

### TARGET INFORMATION

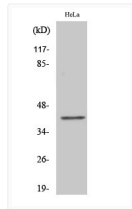
Gene ID	<a href="#">1240</a>
Gene Symbol	<a href="#">CMKLR1</a>
UniProt ID	<a href="#">CML1_HUMAN</a>
Immunogen Region	221-270 aa
Specificity	ChemR23 Polyclonal Antibody detects endogenous levels of ChemR23 protein.

### ADDITIONAL INFORMATION

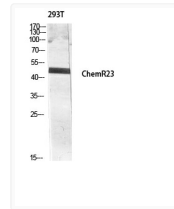
Note STRICTLY FOR FURTHER SCIENTIFIC RESEARCH USE ONLY (RUO). MUST NOT TO BE USED IN DIAGNOSTIC OR THERAPEUTIC APPLICATIONS.



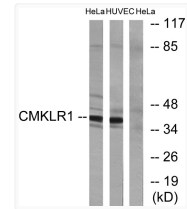
Western blot analysis of various cells using ChemR23 Polyclonal Antibody diluted at 1:1000 STJ92262



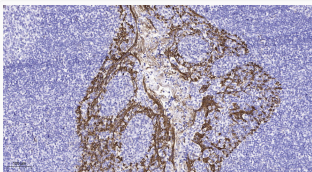
Western blot analysis of COLO205 cells using ChemR23 polyclonal antibody diluted at 1:1000 STJ92262



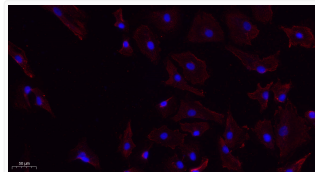
Western blot analysis of 293T lysate using ChemR23 antibody. Antibody was diluted at 1:1000. STJ92262



Western blot analysis of lysates from HeLa and HUVEC cells, using CMKLR1 Antibody. The lane on the right was blocked STJ92262



Immunohistochemical analysis of paraffin-embedded human tonsil. 1, Antibody was diluted at 1:200 (4° overnight). 2, STJ92262



Immunofluorescence analysis of A549. 1, primary antibody (red) was diluted at 1:200 (4°C overnight). 2, Goat Anti-Rabbit STJ92262