

Anti-CSF1R antibody (781-830 aa) (STJ92246)

GENERAL INFORMATION

Product Type	Primary antibodies
Applications	WB/IHC/IF/ELISA
Host / Source	Rabbit
Reactivity	Human/Rat/Mouse

PRODUCT PROPERTIES

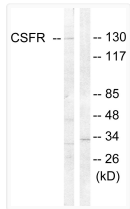
Clonality	Polyclonal
Concentration	1 mg/mL
Conjugation	Unconjugated
Purification	The antibody was affinity-purified from rabbit antiserum by affinity-chromatography using epitope-specific immunogen.
Dilution Range	WB 1:500-1:2000 IHC 1:100-1:300 IF 1:200-1:1000 ELISA 1:40000
Formulation	Liquid in PBS containing 50% Glycerol, 0.5% BSA and 0.02% Sodium Azide.
Isotype	IgG
Molecular Weight	Observed: 130-170kD
Storage Instruction	Store at -20°C for up to 1 year from the date of receipt, and avoid repeat freeze-thaw cycles.

TARGET INFORMATION

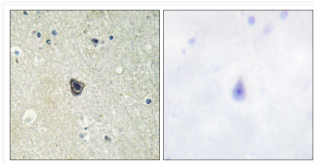
Gene ID	1436
Gene Symbol	CSF1R
UniProt ID	CSF1R_HUMAN
Immunogen Region	781-830 aa
Specificity	c-Fms Polyclonal Antibody detects endogenous levels of c-Fms protein.

ADDITIONAL INFORMATION

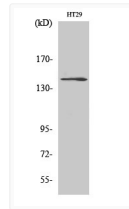
Note **STRICTLY FOR FURTHER SCIENTIFIC RESEARCH USE ONLY (RUO). MUST NOT TO BE USED IN DIAGNOSTIC OR THERAPEUTIC APPLICATIONS.**



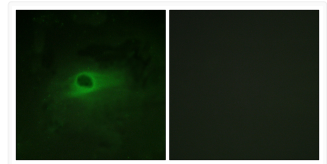
Western blot analysis of lysates from HT29 cells, using CSFR Antibody. The lane on the right is blocked with the synthesized peptide.



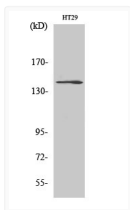
Immunohistochemistry analysis of paraffin-embedded human brain tissue, using CSFR Antibody. The picture on the right is blocked with the synthesized peptide.



Western blot analysis of HT29 cells using c-Fms Polyclonal Antibody



Immunofluorescence analysis of HeLa cells, using CSFR Antibody. The picture on the right is blocked with the synthesized peptide.



Western blot analysis of various cells using c-Fms Polyclonal Antibody