

Anti-CEP170 antibody (701-750 aa) (STJ92223)

GENERAL INFORMATION

Product Type	Primary antibodies
Applications	WB/IHC/IF/ELISA
Host / Source	Rabbit
Reactivity	Human/Rat/Mouse

PRODUCT PROPERTIES

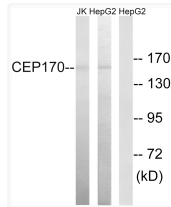
Clonality	Polyclonal
Concentration	1 mg/mL
Conjugation	Unconjugated
Purification	The antibody was affinity-purified from rabbit antiserum by affinity-chromatography using epitope-specific immunogen.
Dilution Range	WB 1:500-1:2000 IHC 1:100-1:300 ELISA 1:40000 IF 1:50-200
Formulation	Liquid in PBS containing 50% Glycerol, 0.5% BSA and 0.02% Sodium Azide.
Isotype	IgG
Molecular Weight	Observed: 160kD
Storage Instruction	Store at -20°C for up to 1 year from the date of receipt, and avoid repeat freeze-thaw cycles.

TARGET INFORMATION

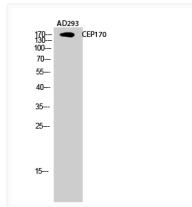
Gene ID	9859
Gene Symbol	CEP170
UniProt ID	CE170_HUMAN
Immunogen Region	701-750 aa
Specificity	CEP170 Polyclonal Antibody detects endogenous levels of CEP170 protein.

ADDITIONAL INFORMATION

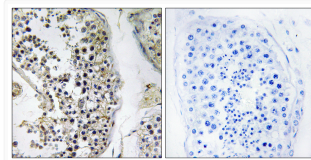
Note STRICTLY FOR FURTHER SCIENTIFIC RESEARCH USE ONLY (RUO). MUST NOT TO BE USED IN DIAGNOSTIC OR THERAPEUTIC APPLICATIONS.



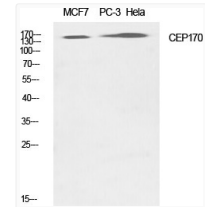
Western blot analysis of lysates from HepG2 and Jurkat cells, using CEP170 Antibody. The lane on the right is blocked with the synthesized peptide.



Western blot analysis of AD293 cells using CEP170 Polyclonal Antibody diluted at 1: 1000



Immunohistochemistry analysis of paraffin-embedded human testis tissue, using CEP170 Antibody. The picture on the right is blocked with the synthesized peptide.



Western blot analysis of various cells using CEP170 Polyclonal Antibody diluted at 1: 1000