

## Anti-CUX1 antibody (10-59 aa) (STJ92210)

### GENERAL INFORMATION

|               |                    |
|---------------|--------------------|
| Product Type  | Primary antibodies |
| Applications  | WB/IHC/IF/ELISA    |
| Host / Source | Rabbit             |
| Reactivity    | Human/Mouse        |

### PRODUCT PROPERTIES

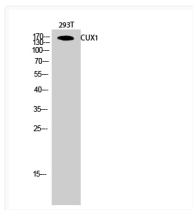
|                     |   |
|---------------------|---|
| Clonality           | Polyclonal  |
| Concentration       | 1 mg/mL   |
| Conjugation         | Unconjugated  |
| Purification        | The antibody was affinity-purified from rabbit antiserum by affinity-chromatography using epitope-specific immunogen. |
| Dilution Range      | WB 1:500-1:2000<br>IHC 1:100-1:300<br>IF 1:200-1:1000<br>ELISA 1:40000  |
| Formulation         | Liquid in PBS containing 50% Glycerol, 0.5% BSA and 0.02% Sodium Azide.   |
| Isotype             | IgG   |
| Molecular Weight    | Observed: 164kD   |
| Storage Instruction | Store at -20°C for up to 1 year from the date of receipt, and avoid repeat freeze-thaw cycles.                        |

### TARGET INFORMATION

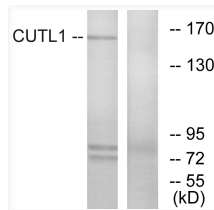
|                  |   |
|------------------|---|
| Gene ID          | <a href="#">1523</a><br><a href="#">1523</a>                        |
| Gene Symbol      | <a href="#">CUX1</a><br><a href="#">CUX1</a>                        |
| UniProt ID       | <a href="#">CUX1_HUMAN</a><br><a href="#">CASP_HUMAN</a>            |
| Immunogen Region | 10-59 aa  |
| Specificity      | CUX1 Polyclonal Antibody detects endogenous levels of CUX1 protein. |

### ADDITIONAL INFORMATION

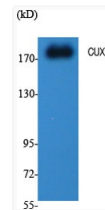
Note **STRICTLY FOR FURTHER SCIENTIFIC RESEARCH USE ONLY (RUO). MUST NOT TO BE USED IN DIAGNOSTIC OR THERAPEUTIC APPLICATIONS.**



Western blot analysis of 293T cells using CUX1 Polyclonal Antibody diluted at 1: 1000



Western blot analysis of lysates from K562 cells, using CUTL1 Antibody. The lane on the right is blocked with the synthesized peptide.



Western blot analysis of various cells using CUX1 Polyclonal Antibody diluted at 1: 1000