

Anti-CDC25B antibody (319-368 aa) (STJ92163)

GENERAL INFORMATION

Product Type	Primary antibodies
Applications	WB/IHC/IF/ELISA
Host / Source	Rabbit
Reactivity	Human/Rat/Mouse

PRODUCT PROPERTIES

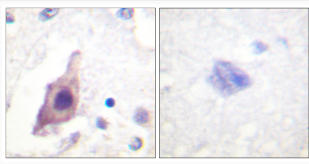
Clonality	Polyclonal
Concentration	1 mg/mL
Conjugation	Unconjugated
Purification	The antibody was affinity-purified from rabbit antiserum by affinity-chromatography using epitope-specific immunogen.
Dilution Range	WB 1:500-1:2000 IHC 1:100-1:300 IF 1:200-1:1000 ELISA 1:5000
Formulation	Liquid in PBS containing 50% Glycerol, 0.5% BSA and 0.02% Sodium Azide.
Isotype	IgG
Molecular Weight	Observed: 64kD
Storage Instruction	Store at -20°C for up to 1 year from the date of receipt, and avoid repeat freeze-thaw cycles.

TARGET INFORMATION

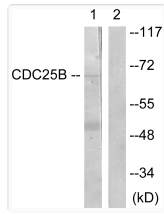
Gene ID	994
Gene Symbol	CDC25B
UniProt ID	MPIP2_HUMAN
Immunogen Region	319-368 aa
Specificity	Cdc25B Polyclonal Antibody detects endogenous levels of Cdc25B protein.

ADDITIONAL INFORMATION

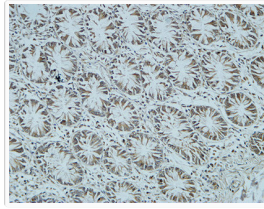
Note	STRICTLY FOR FURTHER SCIENTIFIC RESEARCH USE ONLY (RUO). MUST NOT TO BE USED IN DIAGNOSTIC OR THERAPEUTIC APPLICATIONS.
------	---



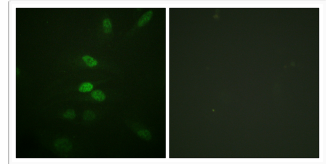
Immunohistochemistry analysis of paraffin-embedded human brain tissue, using CDC25B Antibody. The picture on the right is blocked with the synthesized peptide.



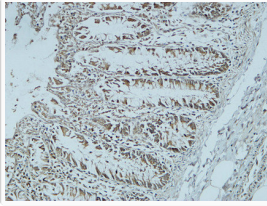
Western blot analysis of lysates from Raw264.7 cells, treated with UV 15', using CDC25B Antibody. The lane on the right is blocked with the synthesized peptide.



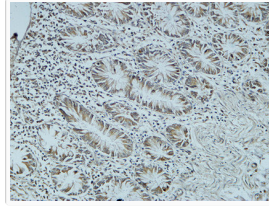
Immunohistochemical analysis of paraffin-embedded Human colon. 1, Antibody was diluted at 1:400 (4°C overnight). 2, High-pressure and temperature EDTA, pH8.0 was used for antigen retrieval. 3, Secondary antibody was diluted at 1:200 (room temperature, 30min).



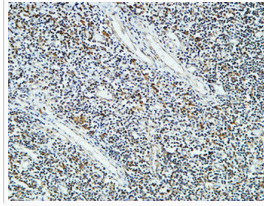
Immunofluorescence analysis of HeLa cells, using CDC25B Antibody. The picture on the right is blocked with the synthesized peptide.



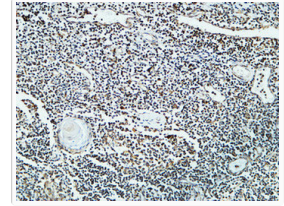
Immunohistochemical analysis of paraffin-embedded Human colon. 1, Antibody was diluted at 1:400 (4°C overnight). 2, High-pressure and temperature EDTA, pH8.0 was used for antigen retrieval. 3, Secondary antibody was diluted at 1:200 (room temperature, 30min).



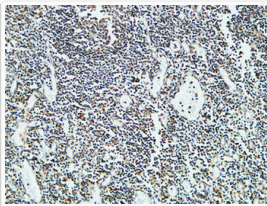
Immunohistochemical analysis of paraffin-embedded Human colon. 1, Antibody was diluted at 1:400 (4°C overnight). 2, High-pressure and temperature EDTA, pH8.0 was used for antigen retrieval. 3, Secondary antibody was diluted at 1:200 (room temperature, 30min).



Immunohistochemical analysis of paraffin-embedded Human Amygdala. 1, Antibody was diluted at 1:200 (4°C overnight). 2, High-pressure and temperature EDTA, pH8.0 was used for antigen retrieval. 3, Secondary antibody was diluted at 1:200 (room temperature, 30min).



Immunohistochemical analysis of paraffin-embedded Human Amygdala. 1, Antibody was diluted at 1:200 (4°C overnight). 2, High-pressure and temperature EDTA, pH8.0 was used for antigen retrieval. 3, Secondary antibody was diluted at 1:200 (room temperature, 30min).



Immunohistochemical analysis of paraffin-embedded Human Amygdala. 1, Antibody was diluted at 1:200 (4°C overnight). 2, High-pressure and temperature EDTA, pH8.0 was used for antigen retrieval. 3, Secondary antibody was diluted at 1:200 (room temperature, 30min).