

## Anti-CD9 antibody (101-150 aa) (STJ92147)

### GENERAL INFORMATION

Product Type	Primary antibodies
Applications	WB/IHC/IF/ELISA
Host / Source	Rabbit
Reactivity	Human/Mouse/Rat

### PRODUCT PROPERTIES

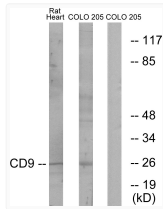
Clonality	Polyclonal
Concentration	1 mg/mL
Conjugation	Unconjugated
Purification	The antibody was affinity-purified from rabbit antiserum by affinity-chromatography using epitope-specific immunogen.
Dilution Range	WB 1:500-1:2000 IHC-P 1:100-300 ELISA 1:20000 IF 1:100-300
Formulation	Liquid in PBS containing 50% Glycerol, 0.5% BSA and 0.02% Sodium Azide.
Isotype	IgG
Molecular Weight	Observed: 25kD
Storage Instruction	Store at -20°C for up to 1 year from the date of receipt, and avoid repeat freeze-thaw cycles.

### TARGET INFORMATION

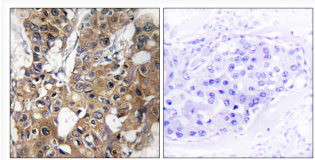
Gene ID	<a href="#">928</a>
Gene Symbol	<a href="#">CD9</a>
UniProt ID	<a href="#">CD9_HUMAN</a>
Immunogen Region	101-150 aa
Specificity	CD9 Polyclonal Antibody detects endogenous levels of CD9 protein.

### ADDITIONAL INFORMATION

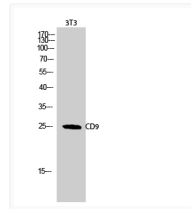
Note STRICTLY FOR FURTHER SCIENTIFIC RESEARCH USE ONLY (RUO). MUST NOT TO BE USED IN DIAGNOSTIC OR THERAPEUTIC APPLICATIONS.



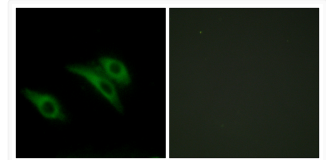
Western blot analysis of lysates from rat heart and COLO cells, using CD9 Antibody. The lane on the right is blocked with the synthesized peptide.



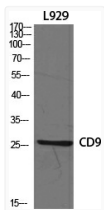
Immunohistochemistry analysis of paraffin-embedded human breast carcinoma tissue, using CD9 Antibody. The picture on the right is blocked with the synthesized peptide.



Western blot analysis of 3T3 cells using CD9 Polyclonal Antibody diluted at 1 : 1000



Immunofluorescence analysis of HeLa cells, using CD9 Antibody. The picture on the right is blocked with the synthesized peptide.



Western blot analysis of various cells using CD9 Polyclonal Antibody diluted at 1 : 1000