

Anti-POLR1G antibody (441-490 aa) (STJ92124)

GENERAL INFORMATION

Product Type	Primary antibodies
Applications	WB/IHC/IF/ELISA
Host / Source	Rabbit
Reactivity	Human/Rat/Mouse

PRODUCT PROPERTIES

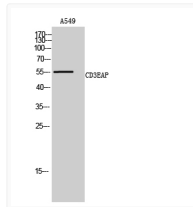
Clonality	Polyclonal
Concentration	1 mg/mL
Conjugation	Unconjugated
Purification	The antibody was affinity-purified from rabbit antiserum by affinity-chromatography using epitope-specific immunogen.
Dilution Range	WB 1:500-1:2000 IHC 1:100-1:300 ELISA 1:40000 IF 1:50-200
Formulation	Liquid in PBS containing 50% Glycerol, 0.5% BSA and 0.02% Sodium Azide.
Isotype	IgG
Molecular Weight	Observed: 55kD
Storage Instruction	Store at -20°C for up to 1 year from the date of receipt, and avoid repeat freeze-thaw cycles.

TARGET INFORMATION

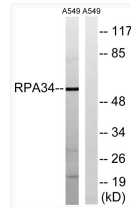
Gene ID	10849
Gene Symbol	POLR1G
UniProt ID	RPA34_HUMAN
Immunogen Region	441-490 aa
Specificity	CD3EAP Polyclonal Antibody detects endogenous levels of CD3EAP protein.

ADDITIONAL INFORMATION

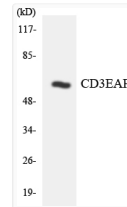
Note STRICTLY FOR FURTHER SCIENTIFIC RESEARCH USE ONLY (RUO). MUST NOT TO BE USED IN DIAGNOSTIC OR THERAPEUTIC APPLICATIONS.



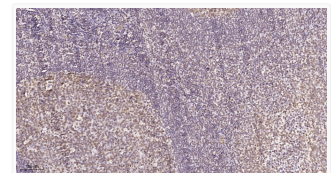
Western Blot analysis of A549 cells using CD3EAP Polyclonal Antibody on cells' nuclei extracted by Minute™ Cytoplasmic Extraction Reagent. STJ92124



Western blot analysis of lysates from A549 cells, using CD3EAP Antibody. The lane on the right was blocked with the STJ92124



Western blot analysis of the lysates from HUVEC cells using CD3EAP antibody. STJ92124



Immunohistochemical analysis of paraffin-embedded human tonsil. 1, Tris-EDTA, pH 9.0 was used for antigen retrieval. 2, STJ92124