

## Anti-CD179b antibody (26-75 aa) (STJ92099)

### GENERAL INFORMATION

|               |                    |
|---------------|--------------------|
| Product Type  | Primary antibodies |
| Applications  | WB/ELISA           |
| Host / Source | Rabbit             |
| Reactivity    | Human/Rat/Mouse    |

### PRODUCT PROPERTIES

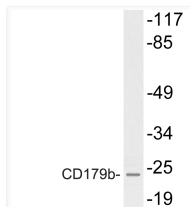
|                     |   |
|---------------------|---|
| Clonality           | Polyclonal  |
| Concentration       | 1 mg/mL   |
| Conjugation         | Unconjugated  |
| Purification        | The antibody was affinity-purified from rabbit antiserum by affinity-chromatography using epitope-specific immunogen. |
| Dilution Range      | WB 1:500-1:2000<br>ELISA 1:10000  |
| Formulation         | Liquid in PBS containing 50% Glycerol, 0.5% BSA and 0.02% Sodium Azide.   |
| Isotype             | IgG   |
| Molecular Weight    | Observed: 23kD  |
| Storage Instruction | Store at -20°C for up to 1 year from the date of receipt, and avoid repeat freeze-thaw cycles.                        |

### TARGET INFORMATION

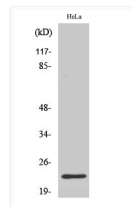
|                  |   |
|------------------|---|
| Gene ID          | <a href="#">3543</a><br><a href="#">NA</a><br><a href="#">NA</a><br><a href="#">IGLL1</a><br><a href="#">IGLC6</a><br><a href="#">IGLL1_HUMAN</a><br><a href="#">IGLC6_HUMAN</a><br><a href="#">IGLC7_HUMAN</a> |
| Immunogen Region | 26-75 aa  |
| Specificity      | CD179b Polyclonal Antibody detects endogenous levels of CD179b protein.   |

### ADDITIONAL INFORMATION

Note STRICTLY FOR FURTHER SCIENTIFIC RESEARCH USE ONLY (RUO). MUST NOT TO BE USED IN DIAGNOSTIC OR THERAPEUTIC APPLICATIONS.



Western blot analysis of lysate from HeLa cells, using CD179b antibody.



Western blot analysis of various cells using CD179b Polyclonal Antibody diluted at 1: 1000