

## Anti-CCDC102B antibody (81-130 aa) (STJ92066)

### GENERAL INFORMATION

|               |                    |
|---------------|--------------------|
| Product Type  | Primary antibodies |
| Applications  | WB/IHC/IF/ELISA    |
| Host / Source | Rabbit             |
| Reactivity    | Human/Rat/Mouse    |

### PRODUCT PROPERTIES

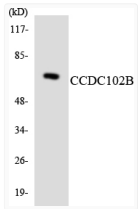
|                     |   |
|---------------------|---|
| Clonality           | Polyclonal  |
| Concentration       | 1 mg/mL   |
| Conjugation         | Unconjugated  |
| Purification        | The antibody was affinity-purified from rabbit antiserum by affinity-chromatography using epitope-specific immunogen. |
| Dilution Range      | WB 1:500-1:2000<br>IHC 1:100-1:300<br>ELISA 1:40000<br>IF 1:50-200  |
| Formulation         | Liquid in PBS containing 50% Glycerol, 0.5% BSA and 0.02% Sodium Azide.   |
| Isotype             | IgG   |
| Molecular Weight    | Observed: 60kD  |
| Storage Instruction | Store at -20°C for up to 1 year from the date of receipt, and avoid repeat freeze-thaw cycles.                        |

### TARGET INFORMATION

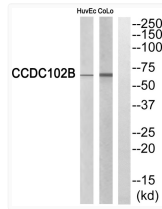
|                  |   |
|------------------|---|
| Gene ID          | <a href="#">79839</a>   |
| Gene Symbol      | <a href="#">CCDC102B</a>  |
| UniProt ID       | <a href="#">C102B_HUMAN</a>   |
| Immunogen Region | 81-130 aa   |
| Specificity      | CCDC102B Polyclonal Antibody detects endogenous levels of CCDC102B protein. |

### ADDITIONAL INFORMATION

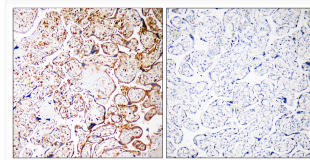
Note **STRICTLY FOR FURTHER SCIENTIFIC RESEARCH USE ONLY (RUO). MUST NOT TO BE USED IN DIAGNOSTIC OR THERAPEUTIC APPLICATIONS.**



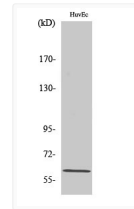
Western blot analysis of the lysates from HUVEC cells using CCDC102B antibody.



Western blot analysis of CCDC102B Antibody. The lane on the right is blocked with the CCDC102B peptide.



Immunohistochemistry analysis of paraffin-embedded human placenta, using CCDC102B Antibody. The lane on the right is blocked with the CCDC102B peptide.



Western blot analysis of various cells using CCDC102B Polyclonal Antibody diluted at 1:1000