

Anti-LGALS3 antibody (141-190 aa) (STJ92060)

GENERAL INFORMATION

Product Type	Primary antibodies
Applications	WB/IHC/IF/ELISA
Host / Source	Rabbit
Reactivity	Human/Mouse/Rat

PRODUCT PROPERTIES

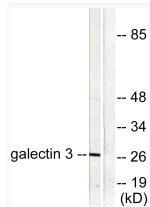
Clonality	Polyclonal
Concentration	1 mg/mL
Conjugation	Unconjugated
Purification	The antibody was affinity-purified from rabbit antiserum by affinity-chromatography using epitope-specific immunogen.
Dilution Range	WB 1:500-1:2000 IHC 1:100-1:300 IF 1:200-1:1000 ELISA 1:20000
Formulation	Liquid in PBS containing 50% Glycerol, 0.5% BSA and 0.02% Sodium Azide.
Isotype	IgG
Molecular Weight	Observed: 33kD
Storage Instruction	Store at -20°C for up to 1 year from the date of receipt, and avoid repeat freeze-thaw cycles.

TARGET INFORMATION

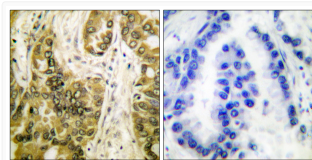
Gene ID	3958
Gene Symbol	LGALS3
UniProt ID	LEG3_HUMAN
Immunogen Region	141-190 aa
Specificity	CBP 35 Polyclonal Antibody detects endogenous levels of CBP 35 protein.

ADDITIONAL INFORMATION

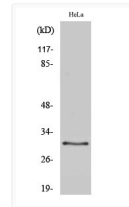
Note **STRICTLY FOR FURTHER SCIENTIFIC RESEARCH USE ONLY (RUO). MUST NOT TO BE USED IN DIAGNOSTIC OR THERAPEUTIC APPLICATIONS.**



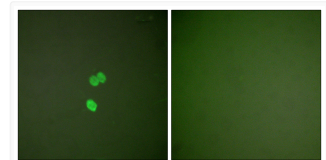
Western blot analysis of lysates from HeLa cells, using Galectin 3 Antibody. The lane on the right is blocked with the synthesized peptide.



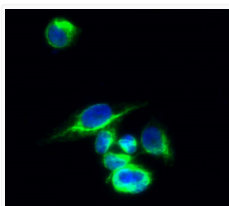
Immunohistochemistry analysis of paraffin-embedded human lung carcinoma tissue, using Galectin 3 Antibody. The picture on the right is blocked with the synthesized peptide.



Western blot analysis of various cells using CBP 35 Polyclonal Antibody diluted at 1 : 2000



Immunofluorescence analysis of NIH/3T3 cells, using Galectin 3 Antibody. The picture on the right is blocked with the synthesized peptide.



Immunofluorescence analysis of HeLa cell. 1, CBP 35 Polyclonal Antibody (green) was diluted at 1:200 (4°C overnight). 2, Goat Anti Rabbit Alexa Fluor 488 Catalog: (NA was diluted at 1:1000 (room temperature, 50min). 3 DAPI (blue) 10min.