

## Anti-CBL antibody (740-789 aa) (STJ92055)

### GENERAL INFORMATION

Product Type	Primary antibodies
Applications	WB/IHC/IF/ELISA
Host / Source	Rabbit
Reactivity	Human/Mouse/Rat

### PRODUCT PROPERTIES

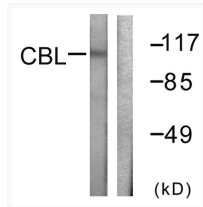
Clonality	Polyclonal
Concentration	1 mg/mL
Conjugation	Unconjugated
Purification	The antibody was affinity-purified from rabbit antiserum by affinity-chromatography using epitope-specific immunogen.
Dilution Range	WB 1:500-1:2000 IHC 1:100-1:300 IF 1:200-1:1000 ELISA 1:5000
Formulation	Liquid in PBS containing 50% Glycerol, 0.5% BSA and 0.02% Sodium Azide.
Isotype	IgG
Molecular Weight	Observed: 100kD
Storage Instruction	Store at -20°C for up to 1 year from the date of receipt, and avoid repeat freeze-thaw cycles.

### TARGET INFORMATION

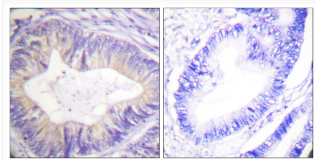
Gene ID	<a href="#">867</a>
Gene Symbol	<a href="#">CBL</a>
UniProt ID	<a href="#">CBL_HUMAN</a>
Immunogen Region	740-789 aa
Specificity	Cbl Polyclonal Antibody detects endogenous levels of Cbl protein.

### ADDITIONAL INFORMATION

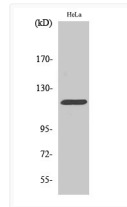
Note **STRICTLY FOR FURTHER SCIENTIFIC RESEARCH USE ONLY (RUO). MUST NOT TO BE USED IN DIAGNOSTIC OR THERAPEUTIC APPLICATIONS.**



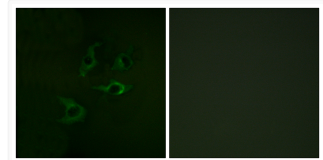
Western blot analysis of lysates from HeLa cells, treated with EGF 200ng/ml 30', using CBL Antibody. The lane on the right is blocked with the synthesized peptide.



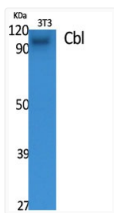
Immunohistochemistry analysis of paraffin-embedded human colon carcinoma tissue, using CBL Antibody. The picture on the right is blocked with the synthesized peptide.



Western blot analysis of HeLa cells using Cbl Polyclonal Antibody



Immunofluorescence analysis of A549 cells, using CBL Antibody. The picture on the right is blocked with the synthesized peptide.



Western blot analysis of various cells using Cbl Polyclonal Antibody