

## Anti-CASP3 antibody (116-165 aa) (STJ92021)

### GENERAL INFORMATION

Product Type	Primary antibodies
Applications	WB/IHC/IF/ELISA
Host / Source	Rabbit
Reactivity	Human/Mouse/Rat/Fish

### PRODUCT PROPERTIES

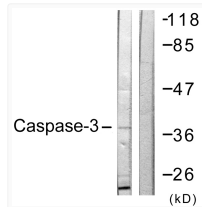
Clonality	Polyclonal
Concentration	1 mg/mL
Conjugation	Unconjugated
Purification	The antibody was affinity-purified from rabbit antiserum by affinity-chromatography using epitope-specific immunogen.
Dilution Range	WB 1:500-1:2000 IHC-P 1:100-300 ELISA 1:20000 IF 1:100-300
Formulation	Liquid in PBS containing 50% Glycerol, 0.5% BSA and 0.02% Sodium Azide.
Isotype	IgG
Molecular Weight	Observed: 35kD
Storage Instruction	Store at -20°C for up to 1 year from the date of receipt, and avoid repeat freeze-thaw cycles.

### TARGET INFORMATION

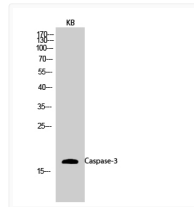
Gene ID	<a href="#">836</a>
Gene Symbol	<a href="#">CASP3</a>
UniProt ID	<a href="#">CASP3_HUMAN</a>
Immunogen Region	116-165 aa
Specificity	Caspase-3 Polyclonal Antibody detects endogenous levels of Caspase-3 protein.

### ADDITIONAL INFORMATION

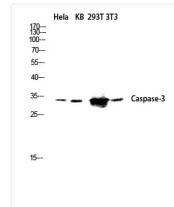
Note STRICTLY FOR FURTHER SCIENTIFIC RESEARCH USE ONLY (RUO). MUST NOT TO BE USED IN DIAGNOSTIC OR THERAPEUTIC APPLICATIONS.



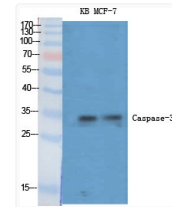
Western blot analysis of lysates from NIH/3T3 cells, treated with Etoposide 25uM 24h, using Caspase 3 Antibody. The lane on the right is blocked with the synthesized peptide.



Western blot analysis of KB cells using Caspase-3 Polyclonal Antibody diluted at 1: 1000



Western blot analysis of HeLa KB 293T 3T3 lysis using Caspase-3 antibody. Antibody was diluted at 1:1000



Western blot analysis of various cells using Caspase-3 Polyclonal Antibody diluted at 1: 1000