

## Anti-CaMKII Beta/Gamma antibody (509-558 aa) (STJ91990)

### GENERAL INFORMATION

|               |                    |
|---------------|--------------------|
| Product Type  | Primary antibodies |
| Applications  | WB/IF/ELISA        |
| Host / Source | Rabbit             |
| Reactivity    | Human/Mouse/Rat    |

### PRODUCT PROPERTIES

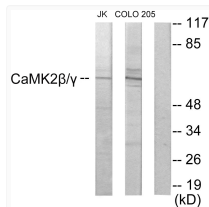
|                     |   |
|---------------------|---|
| Clonality           | Polyclonal  |
| Concentration       | 1 mg/mL   |
| Conjugation         | Unconjugated  |
| Purification        | The antibody was affinity-purified from rabbit antiserum by affinity-chromatography using epitope-specific immunogen. |
| Dilution Range      | WB 1:500-1:2000<br>IF 1:200-1:1000<br>ELISA 1:20000   |
| Formulation         | Liquid in PBS containing 50% Glycerol, 0.5% BSA and 0.02% Sodium Azide.   |
| Isotype             | IgG   |
| Molecular Weight    | Observed: 62kD  |
| Storage Instruction | Store at -20°C for up to 1 year from the date of receipt, and avoid repeat freeze-thaw cycles.                        |

### TARGET INFORMATION

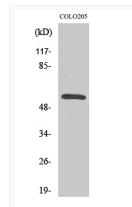
|                  |   |
|------------------|---|
| Gene ID          | <a href="#">816</a><br><a href="#">818</a>  |
| Gene Symbol      | <a href="#">CAMK2B</a><br><a href="#">CAMK2G</a>  |
| UniProt ID       | <a href="#">KCC2B_HUMAN</a><br><a href="#">KCC2G_HUMAN</a>                                    |
| Immunogen Region | 509-558 aa  |
| Specificity      | CaMKII Beta/Gamma Polyclonal Antibody detects endogenous levels of CaMKII Beta/Gamma protein. |

### ADDITIONAL INFORMATION

Note STRICTLY FOR FURTHER SCIENTIFIC RESEARCH USE ONLY (RUO). MUST NOT TO BE USED IN DIAGNOSTIC OR THERAPEUTIC APPLICATIONS.



Western blot analysis of lysates from COLO205 and Jurkat cells, using CaMK2 beta/gamma Antibody. The lane on the right is blocked with the synthesized peptide.



Western blot analysis of various cells using CaMKII Beta/Gamma Polyclonal Antibody