

Anti-CAMKK2 antibody (381-430 aa) (STJ91989)

GENERAL INFORMATION

Product Type	Primary antibodies
Applications	WB/IHC/IF/ELISA
Host / Source	Rabbit
Reactivity	Human/Mouse/Rat

PRODUCT PROPERTIES

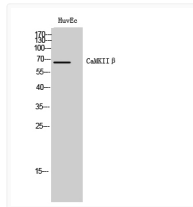
Clonality	Polyclonal
Concentration	1 mg/mL
Conjugation	Unconjugated
Purification	The antibody was affinity-purified from rabbit antiserum by affinity-chromatography using epitope-specific immunogen.
Dilution Range	WB 1:500-1:2000 IHC 1:100-1:300 ELISA 1:10000 IF 1:50-200
Formulation	Liquid in PBS containing 50% Glycerol, 0.5% BSA and 0.02% Sodium Azide.
Isotype	IgG
Molecular Weight	Observed: 65kD
Storage Instruction	Store at -20°C for up to 1 year from the date of receipt, and avoid repeat freeze-thaw cycles.

TARGET INFORMATION

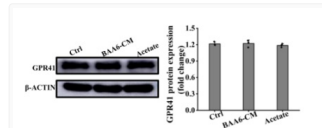
Gene ID	10645
Gene Symbol	CAMKK2
UniProt ID	K1CCC2_HUMAN
Immunogen Region	381-430 aa
Specificity	CaMKII Beta Polyclonal Antibody detects endogenous levels of CaMKII Beta protein.

ADDITIONAL INFORMATION

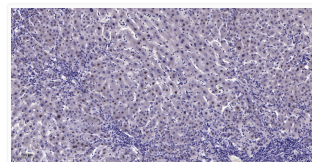
Note STRICTLY FOR FURTHER SCIENTIFIC RESEARCH USE ONLY (RUO). MUST NOT TO BE USED IN DIAGNOSTIC OR THERAPEUTIC APPLICATIONS.



Western Blot analysis of HUVECs using CaMKII β Polyclonal Antibody STJ91989



Western Blot (WB): Bifidobacterium animalis subsp. lactis A6 Enhances Fatty Acid β -Oxidation of Adipose Tissue to STJ91989



Immunohistochemical analysis of paraffin-embedded human liver cancer. 1, Antibody was diluted at 1:200 (4 $^{\circ}$ overnight). STJ91989