

Anti-CaMKII Alpha/Delta antibody (256-305 aa) (STJ91988)

GENERAL INFORMATION

Product Type	Primary antibodies
Applications	WB/IHC/IF/ELISA
Host / Source	Rabbit
Reactivity	Human/Mouse/Rat

PRODUCT PROPERTIES

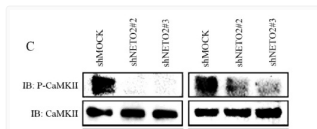
Clonality	Polyclonal
Concentration	1 mg/mL
Conjugation	Unconjugated
Purification	The antibody was affinity-purified from rabbit antiserum by affinity-chromatography using epitope-specific immunogen.
Dilution Range	WB 1:500-1:2000 IHC 1:100-1:300 IF 1:200-1:1000 ELISA 1:10000
Formulation	Liquid in PBS containing 50% Glycerol, 0.5% BSA and 0.02% Sodium Azide.
Isotype	IgG
Molecular Weight	Observed: 54kD
Storage Instruction	Store at -20°C for up to 1 year from the date of receipt, and avoid repeat freeze-thaw cycles.

TARGET INFORMATION

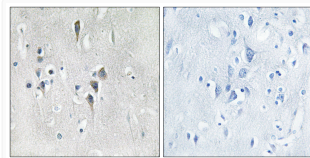
Gene ID	817 815
Gene Symbol	CAMK2D CAMK2A
UniProt ID	KCC2D_HUMAN KCC2A_HUMAN
Immunogen Region	256-305 aa
Specificity	CaMKII Alpha/Delta Polyclonal Antibody detects endogenous levels of CaMKII Alpha/Delta protein.

ADDITIONAL INFORMATION

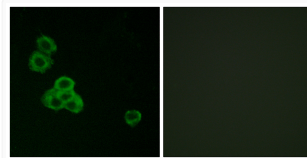
Note **STRICTLY FOR FURTHER SCIENTIFIC RESEARCH USE ONLY (RUO). MUST NOT TO BE USED IN DIAGNOSTIC OR THERAPEUTIC APPLICATIONS.**



NETO2 promotes melanoma progression via activation of the Ca²⁺/CaMKII signaling pathway. *Frontiers of Medicine*. Cong STJ91988



Immunohistochemistry analysis of paraffin-embedded human brain tissue using CaMK2 alpha/delta Antibody. The picture on STJ91988



Immunofluorescence analysis of MCF7 cells using CaMK2 alpha/delta Antibody. The picture on the right is blocked with STJ91988