

Anti-CA12 antibody (231-280 aa) (STJ91945)

GENERAL INFORMATION

Product Type	Primary antibodies
Applications	WB/IHC/IF/ELISA
Host / Source	Rabbit
Reactivity	Human/Mouse/Rat

PRODUCT PROPERTIES

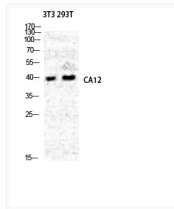
Clonality	Polyclonal
Concentration	1 mg/mL
Conjugation	Unconjugated
Purification	The antibody was affinity-purified from rabbit antiserum by affinity-chromatography using epitope-specific immunogen.
Dilution Range	IHC-P 100-300 WB 1:500-1:2000 ELISA 1:40000 IF 1:50-200
Formulation	Liquid in PBS containing 50% Glycerol, 0.5% BSA and 0.02% Sodium Azide.
Isotype	IgG
Molecular Weight	Observed: 40kD
Storage Instruction	Store at -20°C for up to 1 year from the date of receipt, and avoid repeat freeze-thaw cycles.

TARGET INFORMATION

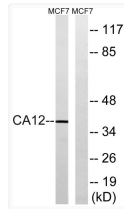
Gene ID	771
Gene Symbol	CA12
UniProt ID	CAH12_HUMAN
Immunogen Region	231-280 aa
Specificity	CA XII Polyclonal Antibody detects endogenous levels of CA XII protein.

ADDITIONAL INFORMATION

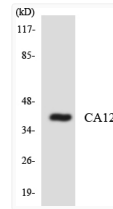
Note **STRICTLY FOR FURTHER SCIENTIFIC RESEARCH USE ONLY (RUO). MUST NOT TO BE USED IN DIAGNOSTIC OR THERAPEUTIC APPLICATIONS.**



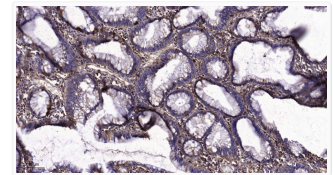
Western Blot analysis of NIH-3T3 and 293T cells using CA XII Polyclonal Antibody diluted at 1:2000 STJ91945



Western blot analysis of lysates from MCF-7 cells, using CA12 Antibody. The lane on the right was blocked with the STJ91945



Western blot analysis of the lysates from COLO205 cells using CA12 antibody. STJ91945



Immunohistochemical analysis of paraffin-embedded human colon cancer. 1, Tris-EDTA, pH 9.0 was used for antigen STJ91945