

Anti-C1QL2 antibody (231-280 aa) (STJ91931)

GENERAL INFORMATION

| | |
|---------------|--------------------|
| Product Type | Primary antibodies |
| Applications | WB/IHC/IF/ELISA |
| Host / Source | Rabbit |
| Reactivity | Human/Mouse |

PRODUCT PROPERTIES

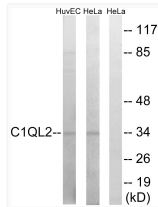
| | |
|---------------------|---|
| Clonality | Polyclonal |
| Concentration | 1 mg/mL |
| Conjugation | Unconjugated |
| Purification | The antibody was affinity-purified from rabbit antiserum by affinity-chromatography using epitope-specific immunogen. |
| Dilution Range | WB 1:500-1:2000 IHC 1:100-1:300 ELISA 1:10000 IF 1:50-200 |
| Formulation | Liquid in PBS containing 50% Glycerol, 0.5% BSA and 0.02% Sodium Azide. |
| Isotype | IgG |
| Molecular Weight | Observed: 32-36kD |
| Storage Instruction | Store at -20°C for up to 1 year from the date of receipt, and avoid repeat freeze-thaw cycles. |

TARGET INFORMATION

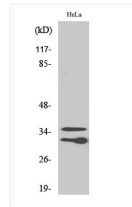
| | |
|------------------|---|
| Gene ID | 165257 |
| Gene Symbol | C1QL2 |
| UniProt ID | C1QL2_HUMAN |
| Immunogen Region | 231-280 aa |
| Specificity | C1qL2 Polyclonal Antibody detects endogenous levels of C1qL2 protein. |

ADDITIONAL INFORMATION

Note **STRICTLY FOR FURTHER SCIENTIFIC RESEARCH USE ONLY (RUO). MUST NOT TO BE USED IN DIAGNOSTIC OR THERAPEUTIC APPLICATIONS.**



Western blot analysis of lysates from HeLa and HUVEC cells, using C1QL2 Antibody. The lane on the right is blocked with the synthesized peptide.



Western blot analysis of various cells using C1qL2 Polyclonal Antibody