

Anti-C1QBP antibody (61-110 aa) (STJ91929)

GENERAL INFORMATION

Product Type	Primary antibodies
Applications	WB/IHC/IF/ELISA
Host / Source	Rabbit
Reactivity	Human/Mouse/Rat

PRODUCT PROPERTIES

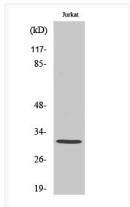
Clonality	Polyclonal
Concentration	1 mg/mL
Conjugation	Unconjugated
Purification	The antibody was affinity-purified from rabbit antiserum by affinity-chromatography using epitope-specific immunogen.
Dilution Range	WB 1:500-1:2000 IHC 1:100-1:300 ELISA 1:40000 IF 1:50-200
Formulation	Liquid in PBS containing 50% Glycerol, 0.5% BSA and 0.02% Sodium Azide.
Isotype	IgG
Molecular Weight	Observed: 32kD
Storage Instruction	Store at -20°C for up to 1 year from the date of receipt, and avoid repeat freeze-thaw cycles.

TARGET INFORMATION

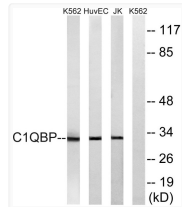
Gene ID	708
Gene Symbol	C1QBP
UniProt ID	C1QBP_HUMAN
Immunogen Region	61-110 aa
Specificity	C1QBP Polyclonal Antibody detects endogenous levels of C1QBP protein.

ADDITIONAL INFORMATION

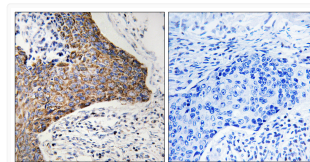
Note STRICTLY FOR FURTHER SCIENTIFIC RESEARCH USE ONLY (RUO). MUST NOT TO BE USED IN DIAGNOSTIC OR THERAPEUTIC APPLICATIONS.



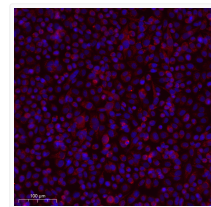
Western blot analysis of various cells using C1QBP Polyclonal Antibody diluted at 1:1000 STJ91929



Western blot analysis of lysates from Jurkat, HUVEC, and K562 cells, using C1QBP Antibody. The lane on the right was STJ91929



Immunohistochemistry analysis of paraffin-embedded human tonsil tissue using C1QBP Antibody. The picture on the right STJ91929



Immunofluorescence analysis of Siha cells. 1, Primary antibody was diluted at 1:100 (4°C overnight). 2, Goat Anti Rabbit STJ91929