

Anti-C1QB antibody (161-210 aa) (STJ91928)

GENERAL INFORMATION

Product Type	Primary antibodies
Applications	WB/FC/IHC/IF/ELISA
Host / Source	Rabbit
Reactivity	Human/Rat/Mouse

PRODUCT PROPERTIES

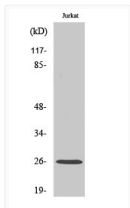
Clonality	Polyclonal
Concentration	1 mg/mL
Conjugation	Unconjugated
Purification	The antibody was affinity-purified from rabbit antiserum by affinity-chromatography using epitope-specific immunogen.
Dilution Range	WB 1:500-2000 FC 1:50-200 IHC-P 1:100-500 IF ICC 1:100-500 ELISA 1:5000-20000
Formulation	Liquid in PBS containing 50% Glycerol, 0.5% BSA and 0.02% Sodium Azide.
Isotype	IgG
Molecular Weight	Observed: 28kD
Storage Instruction	Store at -20°C for up to 1 year from the date of receipt, and avoid repeat freeze-thaw cycles.

TARGET INFORMATION

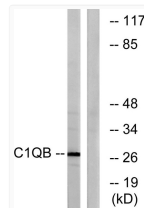
Gene ID	713
Gene Symbol	C1QB
UniProt ID	C1QB_HUMAN
Immunogen Region	161-210 aa
Specificity	C1q-B Polyclonal Antibody detects endogenous levels of C1q-B protein.

ADDITIONAL INFORMATION

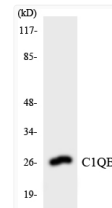
Note **STRICTLY FOR FURTHER SCIENTIFIC RESEARCH USE ONLY (RUO). MUST NOT TO BE USED IN DIAGNOSTIC OR THERAPEUTIC APPLICATIONS.**



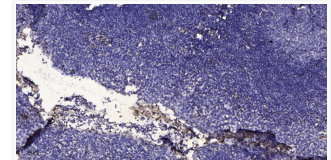
Western Blot analysis of various cells using C1q-B Polyclonal Antibody diluted at 1:1000 STJ91928



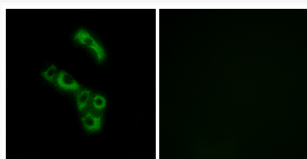
Western blot analysis of lysates from Jurkat cells, using C1QB Antibody. The lane on the right was blocked with the STJ91928



Western blot analysis of the lysates from Jurkat cells using C1QB antibody. STJ91928



Immunohistochemical analysis of paraffin-embedded human tonsil. 1, Antibody was diluted at 1:200 (4° overnight). 2, STJ91928



Immunofluorescence analysis of A549 cells using C1QB Antibody. The picture on the right is blocked with the synthesized STJ91928