

Anti-C/EBP antibody (171-220 aa) (STJ91921)

GENERAL INFORMATION

Product Type	Primary antibodies
Applications	WB/IHC/IF/ELISA
Host / Source	Rabbit
Reactivity	Human/Mouse/Rat

PRODUCT PROPERTIES

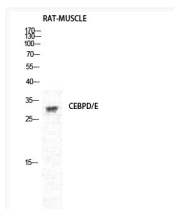
Clonality	Polyclonal
Concentration	1 mg/mL
Conjugation	Unconjugated
Purification	The antibody was affinity-purified from rabbit antiserum by affinity-chromatography using epitope-specific immunogen.
Dilution Range	WB 1:500-1:2000 IHC 1:100-1:300 IF 1:200-1:1000 ELISA 1:20000
Formulation	Liquid in PBS containing 50% Glycerol, 0.5% BSA and 0.02% Sodium Azide.
Isotype	IgG
Molecular Weight	Observed: 28kD
Storage Instruction	Store at -20°C for up to 1 year from the date of receipt, and avoid repeat freeze-thaw cycles.

TARGET INFORMATION

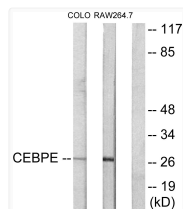
Gene ID	1053 1052
Gene Symbol	CEBPE CEBPD
UniProt ID	CEBPE_HUMAN CEBPD_HUMAN
Immunogen Region	171-220 aa
Specificity	C/EBP Delta/Epsilon Polyclonal Antibody detects endogenous levels of C/EBP Delta/Epsilon protein.

ADDITIONAL INFORMATION

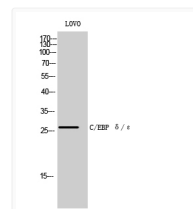
Note **STRICTLY FOR FURTHER SCIENTIFIC RESEARCH USE ONLY (RUO). MUST NOT TO BE USED IN DIAGNOSTIC OR THERAPEUTIC APPLICATIONS.**



Western blot analysis of RAT-MUSCLE cells using C/EBP Delta/Epsilon Polyclonal Antibody diluted at 1: 500 cells nucleus extracted by Minute™ Cytoplasmic and Nuclear Fractionation kit (SC-003, Inventibiotech, MN, USA).



Western blot analysis of lysates from LOVO and RAW264.7 cells, using CEBPD/E Antibody. The lane on the right is blocked with the synthesized peptide.



Western blot analysis of LOVO cells using C/EBP Delta/Epsilon Polyclonal Antibody diluted at 1: 500 cells nucleus extracted by Minute™ Cytoplasmic and Nuclear Fractionation kit (SC-003, Inventibiotech, MN, USA).