

Anti-BRS3 antibody (161-210 aa) (STJ91898)

GENERAL INFORMATION

Product Type	Primary antibodies
Applications	WB/IF/ELISA
Host / Source	Rabbit
Reactivity	Human/Rat/Mouse

PRODUCT PROPERTIES

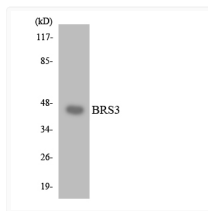
Clonality	Polyclonal
Concentration	1 mg/mL
Conjugation	Unconjugated
Purification	The antibody was affinity-purified from rabbit antiserum by affinity-chromatography using epitope-specific immunogen.
Dilution Range	WB 1:500-1:2000 IF 1:200-1:1000 ELISA 1:40000
Formulation	Liquid in PBS containing 50% Glycerol, 0.5% BSA and 0.02% Sodium Azide.
Isotype	IgG
Molecular Weight	Observed: 44kD
Storage Instruction	Store at -20°C for up to 1 year from the date of receipt, and avoid repeat freeze-thaw cycles.

TARGET INFORMATION

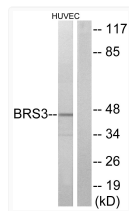
Gene ID	680
Gene Symbol	BRS3
UniProt ID	BRS3_HUMAN
Immunogen Region	161-210 aa
Specificity	BRS-3 Polyclonal Antibody detects endogenous levels of BRS-3 protein.

ADDITIONAL INFORMATION

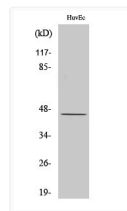
Note **STRICTLY FOR FURTHER SCIENTIFIC RESEARCH USE ONLY (RUO). MUST NOT TO BE USED IN DIAGNOSTIC OR THERAPEUTIC APPLICATIONS.**



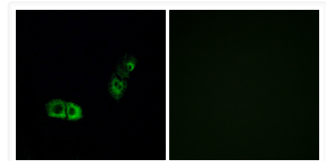
Western blot analysis of the lysates from HT-29 cells using BRS3 antibody.



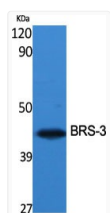
Western blot analysis of lysates from HUVEC cells, using BRS3 Antibody. The lane on the right is blocked with the synthesized peptide.



Western blot analysis of HuvEc cells using BRS-3 Polyclonal Antibody



Immunofluorescence analysis of A549 cells, using BRS3 Antibody. The picture on the right is blocked with the synthesized peptide.



Western blot analysis of various cells using BRS-3 Polyclonal Antibody