

Anti-MYBL2 antibody (551-600 aa) (STJ91875)

GENERAL INFORMATION

Product Type	Primary antibodies
Applications	WB/IP/IF/ELISA
Host / Source	Rabbit
Reactivity	Human/Mouse/Rat/Rice

PRODUCT PROPERTIES

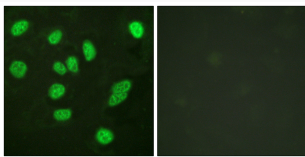
Clonality	Polyclonal
Concentration	1 mg/mL
Conjugation	Unconjugated
Purification	The antibody was affinity-purified from rabbit antiserum by affinity-chromatography using epitope-specific immunogen.
Dilution Range	WB 1:500-1:2000 IF 1:200-1:1000 ELISA 1:20000
Formulation	Liquid in PBS containing 50% Glycerol, 0.5% BSA and 0.02% Sodium Azide.
Isotype	IgG
Molecular Weight	Observed: 80kD
Storage Instruction	Store at -20°C for up to 1 year from the date of receipt, and avoid repeat freeze-thaw cycles.

TARGET INFORMATION

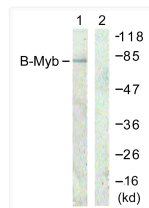
Gene ID	4605
Gene Symbol	MYBL2
UniProt ID	MYBB_HUMAN
Immunogen Region	551-600 aa
Specificity	B-Myb Polyclonal Antibody detects endogenous levels of B-Myb protein.

ADDITIONAL INFORMATION

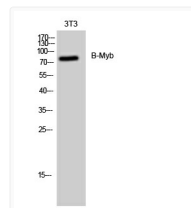
Note **STRICTLY FOR FURTHER SCIENTIFIC RESEARCH USE ONLY (RUO). MUST NOT TO BE USED IN DIAGNOSTIC OR THERAPEUTIC APPLICATIONS.**



Immunofluorescence analysis of HeLa cells, using B-Myb Antibody. The picture on the right is blocked with the synthesized peptide.



Western blot analysis of lysates from A549 cells, using B-Myb Antibody. The lane on the right is blocked with the synthesized peptide.



Western blot analysis of 3T3 cells using B-Myb Polyclonal Antibody diluted at 1:2000 cells nucleus extracted by Minute TM Cytoplasmic and Nuclear Fractionation kit (SC-003, Inventibiotech, MN, USA).