

## Anti-BMP7 antibody (124-173 aa) (STJ91868)

### GENERAL INFORMATION

Product Type	Primary antibodies
Applications	WB/IHC/IF/ELISA
Host / Source	Rabbit
Reactivity	Human/Mouse/Rat

### PRODUCT PROPERTIES

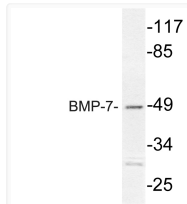
Clonality	Polyclonal
Concentration	1 mg/mL
Conjugation	Unconjugated
Purification	The antibody was affinity-purified from rabbit antiserum by affinity-chromatography using epitope-specific immunogen.
Dilution Range	WB 1:500-1:2000 IHC 1:100-1:300 ELISA 1:40000 IF 1:50-200
Formulation	Liquid in PBS containing 50% Glycerol, 0.5% BSA and 0.02% Sodium Azide.
Isotype	IgG
Molecular Weight	Observed: 55kD
Storage Instruction	Store at -20°C for up to 1 year from the date of receipt, and avoid repeat freeze-thaw cycles.

### TARGET INFORMATION

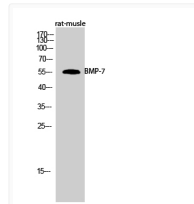
Gene ID	<a href="#">655</a>
Gene Symbol	<a href="#">BMP7</a>
UniProt ID	<a href="#">BMP7_HUMAN</a>
Immunogen Region	124-173 aa
Specificity	BMP-7 Polyclonal Antibody detects endogenous levels of BMP-7 protein.

### ADDITIONAL INFORMATION

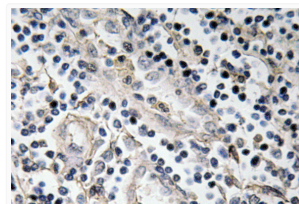
Note STRICTLY FOR FURTHER SCIENTIFIC RESEARCH USE ONLY (RUO). MUST NOT TO BE USED IN DIAGNOSTIC OR THERAPEUTIC APPLICATIONS.



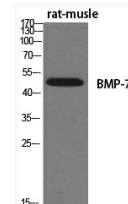
Western blot analysis of lysate from Jurkat cells, using BMP-7 antibody.



Western blot analysis of rat-muscle cells using BMP-7 Polyclonal Antibody diluted at 1: 500



Immunohistochemistry analysis of BMP-7 antibody in paraffin-embedded human tonsil tissue.



Western blot analysis of various cells using BMP-7 Polyclonal Antibody diluted at 1: 500