

Anti-TRAPPC3 antibody (131-180 aa) (STJ91851)

GENERAL INFORMATION

Product Type	Primary antibodies
Applications	WB/IHC/IF/ELISA
Host / Source	Rabbit
Reactivity	Human/Mouse/Rat

PRODUCT PROPERTIES

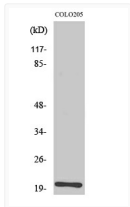
Clonality	Polyclonal
Concentration	1 mg/mL
Conjugation	Unconjugated
Purification	The antibody was affinity-purified from rabbit antiserum by affinity-chromatography using epitope-specific immunogen.
Dilution Range	WB 1:500-1:2000 IHC 1:100-1:300 ELISA 1:5000 IF 1:50-200
Formulation	Liquid in PBS containing 50% Glycerol, 0.5% BSA and 0.02% Sodium Azide.
Isotype	IgG
Molecular Weight	Observed: 22kD
Storage Instruction	Store at -20°C for up to 1 year from the date of receipt, and avoid repeat freeze-thaw cycles.

TARGET INFORMATION

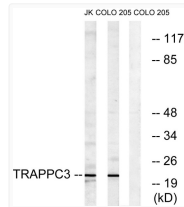
Gene ID	27095
Gene Symbol	TRAPPC3
UniProt ID	TPPC3_HUMAN
Immunogen Region	131-180 aa
Specificity	BET3 Polyclonal Antibody detects endogenous levels of BET3 protein.

ADDITIONAL INFORMATION

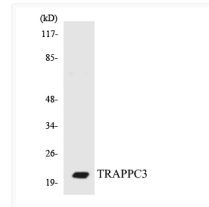
Note: STRICTLY FOR FURTHER SCIENTIFIC RESEARCH USE ONLY (RUO). MUST NOT TO BE USED IN DIAGNOSTIC OR THERAPEUTIC APPLICATIONS.



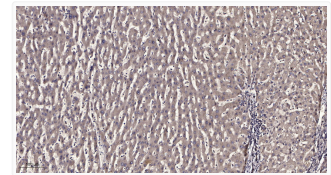
Western blot analysis of various cells using BET3 polyclonal antibody diluted at 1:500 STJ91851



Western blot analysis of lysates from COLO and Jurkat cells, using TRAPPC3 Antibody. The lane on the right is blocked STJ91851



Western blot analysis of the lysates from COLO205 cells using TRAPPC3 antibody. STJ91851



Immunohistochemical analysis of paraffin-embedded human liver cancer. 1, Antibody was diluted at 1:200 (4° overnight). STJ91851