

Anti-BAG3 antibody (411-460 aa) (STJ91805)

GENERAL INFORMATION

Product Type	Primary antibodies
Applications	WB/IHC/IF/ELISA
Host / Source	Rabbit
Reactivity	Human/Mouse/Rat

PRODUCT PROPERTIES

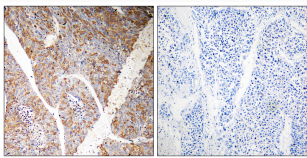
Clonality	Polyclonal
Concentration	1 mg/mL
Conjugation	Unconjugated
Purification	The antibody was affinity-purified from rabbit antiserum by affinity-chromatography using epitope-specific immunogen.
Dilution Range	WB 1:500-1:2000 IHC 1:100-1:300 ELISA 1:40000 IF 1:50-200
Formulation	Liquid in PBS containing 50% Glycerol, 0.5% BSA and 0.02% Sodium Azide.
Isotype	IgG
Molecular Weight	Observed: 80kD
Storage Instruction	Store at -20°C for up to 1 year from the date of receipt, and avoid repeat freeze-thaw cycles.

TARGET INFORMATION

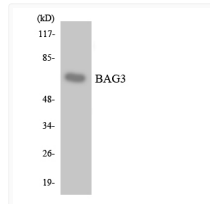
Gene ID	9531
Gene Symbol	BAG3
UniProt ID	BAG3_HUMAN
Immunogen Region	411-460 aa
Specificity	Bag-3 Polyclonal Antibody detects endogenous levels of Bag-3 protein.

ADDITIONAL INFORMATION

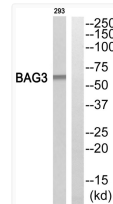
Note: STRICTLY FOR FURTHER SCIENTIFIC RESEARCH USE ONLY (RUO). MUST NOT TO BE USED IN DIAGNOSTIC OR THERAPEUTIC APPLICATIONS.



Immunohistochemistry analysis of paraffin-embedded human liver carcinoma, using BAG3 Antibody. The lane on the right is blocked with the BAG3 peptide.



Western blot analysis of the lysates from K562 cells using BAG3 antibody.



Western blot analysis of BAG3 Antibody. The lane on the right is blocked with the BAG3 peptide.