

## Anti-ACLY antibody (420-469 aa) (STJ91780)

### GENERAL INFORMATION

Product Type	Primary antibodies
Applications	WB/IF/ELISA
Host / Source	Rabbit
Reactivity	Human/Mouse/Rat/Monkey

### PRODUCT PROPERTIES

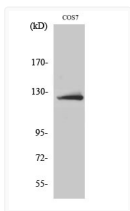
Clonality	Polyclonal
Concentration	1 mg/mL
Conjugation	Unconjugated
Purification	The antibody was affinity-purified from rabbit antiserum by affinity-chromatography using epitope-specific immunogen.
Dilution Range	WB 1:500-1:2000 IF 1:200-1:1000 ELISA 1:10000
Formulation	Liquid in PBS containing 50% Glycerol, 0.5% BSA and 0.02% Sodium Azide.
Isotype	IgG
Molecular Weight	Observed: 120kD
Storage Instruction	Store at -20°C for up to 1 year from the date of receipt, and avoid repeat freeze-thaw cycles.

### TARGET INFORMATION

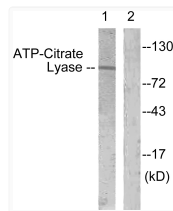
Gene ID	<a href="#">47</a>
Gene Symbol	<a href="#">ACLY</a>
UniProt ID	<a href="#">ACLY_HUMAN</a>
Immunogen Region	420-469 aa
Specificity	ATP-citrate synthase Polyclonal Antibody detects endogenous levels of ATP-citrate synthase protein.

### ADDITIONAL INFORMATION

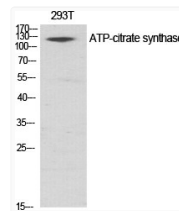
Note **STRICTLY FOR FURTHER SCIENTIFIC RESEARCH USE ONLY (RUO). MUST NOT TO BE USED IN DIAGNOSTIC OR THERAPEUTIC APPLICATIONS.**



Western blot analysis of COS7 cells using ATP-citrate synthase Polyclonal Antibody diluted at 1:1000



Western blot analysis of lysates from COS7 cells, treated with Calyculin 50nM 30', using ATP-Citrate Lyase Antibody. The lane on the right is blocked with the synthesized peptide.



Western blot analysis of various cells using ATP-citrate synthase Polyclonal Antibody diluted at 1:1000