

## Anti-ADRA1B antibody (431-480 aa) (STJ91721)

### GENERAL INFORMATION

Product Type	Primary antibodies
Applications	WB/IF/ELISA
Host / Source	Rabbit
Reactivity	Human/Mouse/Rat

### PRODUCT PROPERTIES

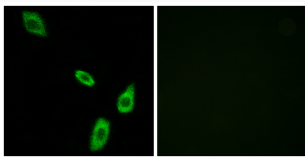
Clonality	Polyclonal
Concentration	1 mg/mL
Conjugation	Unconjugated
Purification	The antibody was affinity-purified from rabbit antiserum by affinity-chromatography using epitope-specific immunogen.
Dilution Range	WB 1:500-1:2000 IF 1:200-1:1000 ELISA 1:20000
Formulation	Liquid in PBS containing 50% Glycerol, 0.5% BSA and 0.02% Sodium Azide.
Isotype	IgG
Molecular Weight	Observed: 60kD
Storage Instruction	Store at -20°C for up to 1 year from the date of receipt, and avoid repeat freeze-thaw cycles.

### TARGET INFORMATION

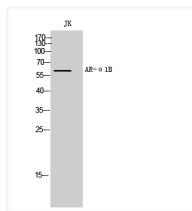
Gene ID	<a href="#">147</a>
Gene Symbol	<a href="#">ADRA1B</a>
UniProt ID	<a href="#">ADA1B_HUMAN</a>
Immunogen Region	431-480 aa
Specificity	AR-Alpha 1B Polyclonal Antibody detects endogenous levels of AR-Alpha 1B protein.

### ADDITIONAL INFORMATION

Note STRICTLY FOR FURTHER SCIENTIFIC RESEARCH USE ONLY (RUO). MUST NOT TO BE USED IN DIAGNOSTIC OR THERAPEUTIC APPLICATIONS.



Immunofluorescence analysis of LOVO cells, using ADRA1B Antibody. The picture on the right is blocked with the synthesized peptide.



Western blot analysis of JK cells using AR-Alpha 1B Polyclonal Antibody