

Anti-ADRA1A antibody (136-185 aa) (STJ91719)

GENERAL INFORMATION

Product Type	Primary antibodies
Applications	WB/IF/ELISA
Host / Source	Rabbit
Reactivity	Human/Mouse/Rat

PRODUCT PROPERTIES

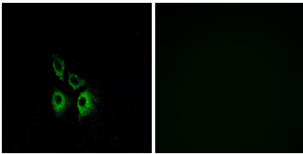
Clonality	Polyclonal
Concentration	1 mg/mL
Conjugation	Unconjugated
Purification	The antibody was affinity-purified from rabbit antiserum by affinity-chromatography using epitope-specific immunogen.
Dilution Range	WB 1:500-1:2000 IF 1:200-1:1000 ELISA 1:10000
Formulation	Liquid in PBS containing 50% Glycerol, 0.5% BSA and 0.02% Sodium Azide.
Isotype	IgG
Molecular Weight	Observed: 51kD
Storage Instruction	Store at -20°C for up to 1 year from the date of receipt, and avoid repeat freeze-thaw cycles.

TARGET INFORMATION

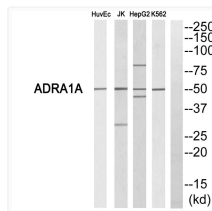
Gene ID	148
Gene Symbol	ADRA1A
UniProt ID	ADA1A_HUMAN
Immunogen Region	136-185 aa
Specificity	AR-Alpha 1A Polyclonal Antibody detects endogenous levels of AR-Alpha 1A protein.

ADDITIONAL INFORMATION

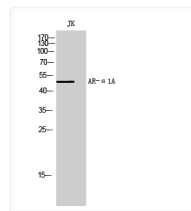
Note STRICTLY FOR FURTHER SCIENTIFIC RESEARCH USE ONLY (RUO). MUST NOT TO BE USED IN DIAGNOSTIC OR THERAPEUTIC APPLICATIONS.



Immunofluorescence analysis of A549 cells, using ADRA1A Antibody. The picture on the right is blocked with the synthesized peptide.



Western blot analysis of ADRA1A Antibody. The lane on the right is blocked with the ADRA1A peptide.



Western blot analysis of JK cells using AR-Alpha 1A Polyclonal Antibody