

## Anti-ARSG antibody (251-300 aa) (STJ91716)

### GENERAL INFORMATION

|               |                    |
|---------------|--------------------|
| Product Type  | Primary antibodies |
| Applications  | WB/IHC/IF/ELISA    |
| Host / Source | Rabbit             |
| Reactivity    | Human/Mouse/Rat    |

### PRODUCT PROPERTIES

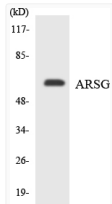
|                     |                                                                                                                       |
|---------------------|-----------------------------------------------------------------------------------------------------------------------|
| Clonality           | Polyclonal                                                                                                            |
| Concentration       | 1 mg/mL                                                                                                               |
| Conjugation         | Unconjugated                                                                                                          |
| Purification        | The antibody was affinity-purified from rabbit antiserum by affinity-chromatography using epitope-specific immunogen. |
| Dilution Range      | WB 1:500-1:2000<br>IHC 1:100-1:300<br>ELISA 1:40000<br>IF 1:50-200                                                    |
| Formulation         | Liquid in PBS containing 50% Glycerol, 0.5% BSA and 0.02% Sodium Azide.                                               |
| Isotype             | IgG                                                                                                                   |
| Molecular Weight    | Observed: 65kD                                                                                                        |
| Storage Instruction | Store at -20°C for up to 1 year from the date of receipt, and avoid repeat freeze-thaw cycles.                        |

### TARGET INFORMATION

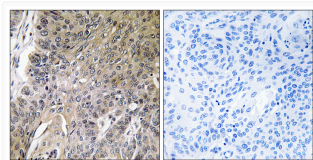
|                  |                                                                                           |
|------------------|-------------------------------------------------------------------------------------------|
| Gene ID          | <a href="#">22901</a>                                                                     |
| Gene Symbol      | <a href="#">ARSG</a>                                                                      |
| UniProt ID       | <a href="#">ARSG_HUMAN</a>                                                                |
| Immunogen Region | 251-300 aa                                                                                |
| Specificity      | Arylsulfatase G Polyclonal Antibody detects endogenous levels of Arylsulfatase G protein. |

### ADDITIONAL INFORMATION

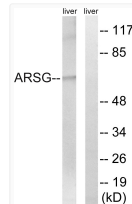
Note **STRICTLY FOR FURTHER SCIENTIFIC RESEARCH USE ONLY (RUO). MUST NOT TO BE USED IN DIAGNOSTIC OR THERAPEUTIC APPLICATIONS.**



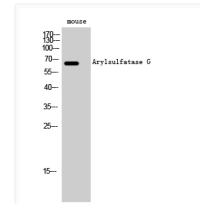
Western blot analysis of the lysates from HeLa cells using ARSG antibody.



Immunohistochemistry analysis of paraffin-embedded human lung carcinoma tissue, using ARSG Antibody. The picture on the right is blocked with the synthesized peptide.



Western blot analysis of lysates from mouse liver, using ARSG Antibody. The lane on the right is blocked with the synthesized peptide.



Western blot analysis of mouse cells using Arylsulfatase G Polyclonal Antibody blocked with the synthesized peptide.