

## Anti-DCLRE1C antibody (482-531 aa) (STJ91710)

### GENERAL INFORMATION

Product Type	Primary antibodies
Applications	IHC/IF/ELISA
Host / Source	Rabbit
Reactivity	Human/Rat/Mouse

### PRODUCT PROPERTIES

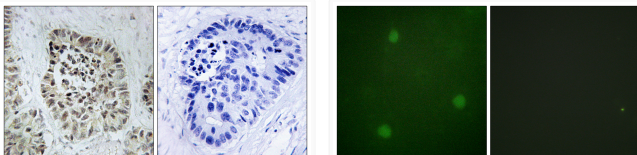
Clonality	Polyclonal
Concentration	1 mg/mL
Conjugation	Unconjugated
Purification	The antibody was affinity-purified from rabbit antiserum by affinity-chromatography using epitope-specific immunogen.
Dilution Range	IHC 1:100-1:300 IF 1:200-1:1000 ELISA 1:10000
Formulation	Liquid in PBS containing 50% Glycerol, 0.5% BSA and 0.02% Sodium Azide.
Isotype	IgG
Molecular Weight	Calculated: 78kD
Storage Instruction	Store at -20°C for up to 1 year from the date of receipt, and avoid repeat freeze-thaw cycles.

### TARGET INFORMATION

Gene ID	<a href="#">64421</a>
Gene Symbol	<a href="#">DCLRE1C</a>
UniProt ID	<a href="#">DCR1C_HUMAN</a>
Immunogen Region	482-531 aa
Specificity	Artemis Polyclonal Antibody detects endogenous levels of Artemis protein.

### ADDITIONAL INFORMATION

Note STRICTLY FOR FURTHER SCIENTIFIC RESEARCH USE ONLY (RUO). MUST NOT TO BE USED IN DIAGNOSTIC OR THERAPEUTIC APPLICATIONS.



Immunohistochemistry analysis of paraffin-embedded human lung carcinoma tissue, using Artemis Antibody. The picture on the right is blocked with the synthesized peptide.

Immunofluorescence analysis of NIH/3T3 cells, using Artemis Antibody. The picture on the right is blocked with the synthesized peptide.