

## Anti-ARRDC1 antibody (167-216 aa) (STJ91703)

### GENERAL INFORMATION

Product Type	Primary antibodies
Applications	WB/IF/ELISA
Host / Source	Rabbit
Reactivity	Human/Mouse/Rat

### PRODUCT PROPERTIES

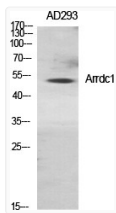
Clonality	Polyclonal
Concentration	1 mg/mL
Conjugation	Unconjugated
Purification	The antibody was affinity-purified from rabbit antiserum by affinity-chromatography using epitope-specific immunogen.
Dilution Range	WB 1:500-2000 IF 1:100-300 ELISA 1:5000-20000
Formulation	Liquid in PBS containing 50% Glycerol, 0.5% BSA and 0.02% Sodium Azide.
Isotype	IgG
Molecular Weight	Observed: 48kD
Storage Instruction	Store at -20°C for up to 1 year from the date of receipt, and avoid repeat freeze-thaw cycles.

### TARGET INFORMATION

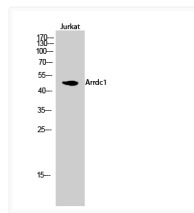
Gene ID	<a href="#">92714</a>
Gene Symbol	<a href="#">ARRDC1</a>
UniProt ID	<a href="#">ARRD1_HUMAN</a>
Immunogen Region	167-216 aa
Specificity	Arrdc1 Polyclonal Antibody detects endogenous levels of Arrdc1 protein.

### ADDITIONAL INFORMATION

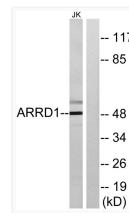
Note STRICTLY FOR FURTHER SCIENTIFIC RESEARCH USE ONLY (RUO). MUST NOT TO BE USED IN DIAGNOSTIC OR THERAPEUTIC APPLICATIONS.



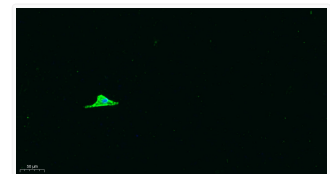
Western blot analysis of various cells using Arrdc1 polyclonal antibody diluted at 1:1000 STJ91703



Western blot analysis of Jurkat cells using Arrdc1 polyclonal antibody diluted at 1:1000 STJ91703



Western blot analysis of lysates from Jurkat cells, using ARRDC1 Antibody. The lane on the right was blocked with the STJ91703



Immunofluorescence analysis of A549. 1, primary antibody was diluted at 1:200 (4°C overnight). 2, Goat Anti Rabbit IgG STJ91703