

## Anti-ACTR3 antibody (369-418 aa) (STJ91701)

### GENERAL INFORMATION

Product Type	Primary antibodies
Applications	WB/ELISA
Host / Source	Rabbit
Reactivity	Human/Mouse/Rat

### PRODUCT PROPERTIES

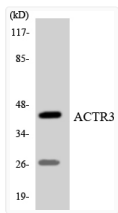
Clonality	Polyclonal
Concentration	1 mg/mL
Conjugation	Unconjugated
Purification	The antibody was affinity-purified from rabbit antiserum by affinity-chromatography using epitope-specific immunogen.
Dilution Range	WB 1:500-1:2000 ELISA 1:40000
Formulation	Liquid in PBS containing 50% Glycerol, 0.5% BSA and 0.02% Sodium Azide.
Isotype	IgG
Molecular Weight	Observed: 47kD
Storage Instruction	Store at -20°C for up to 1 year from the date of receipt, and avoid repeat freeze-thaw cycles.

### TARGET INFORMATION

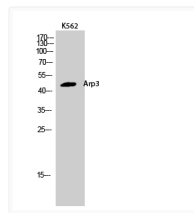
Gene ID	<a href="#">10096</a>
Gene Symbol	<a href="#">ACTR3</a>
UniProt ID	<a href="#">ARP3_HUMAN</a>
Immunogen Region	369-418 aa
Specificity	Arp3 Polyclonal Antibody detects endogenous levels of Arp3 protein.

### ADDITIONAL INFORMATION

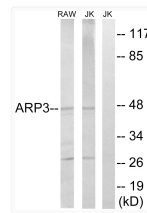
Note **STRICTLY FOR FURTHER SCIENTIFIC RESEARCH USE ONLY (RUO). MUST NOT TO BE USED IN DIAGNOSTIC OR THERAPEUTIC APPLICATIONS.**



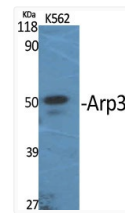
Western blot analysis of the lysates from COLO205 cells using ACTR3 antibody.



Western blot analysis of K562 cells using Arp3 Polyclonal Antibody



Western blot analysis of lysates from Jurkat and RAW264.7 cells, using ACTR3 Antibody. The lane on the right is blocked with the synthesized peptide.



Western blot analysis of various cells using Arp3 Polyclonal Antibody