

Anti-ARMC6 antibody (431-480 aa) (STJ91695)

GENERAL INFORMATION

Product Type	Primary antibodies
Applications	WB/IF/ELISA
Host / Source	Rabbit
Reactivity	Human/Mouse/Rat

PRODUCT PROPERTIES

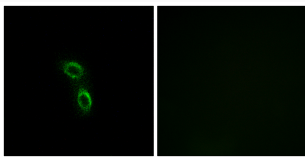
Clonality	Polyclonal
Concentration	1 mg/mL
Conjugation	Unconjugated
Purification	The antibody was affinity-purified from rabbit antiserum by affinity-chromatography using epitope-specific immunogen.
Dilution Range	WB 1:500-1:2000 IF 1:200-1:1000 ELISA 1:40000
Formulation	Liquid in PBS containing 50% Glycerol, 0.5% BSA and 0.02% Sodium Azide.
Isotype	IgG
Molecular Weight	Observed: 54kD
Storage Instruction	Store at -20°C for up to 1 year from the date of receipt, and avoid repeat freeze-thaw cycles.

TARGET INFORMATION

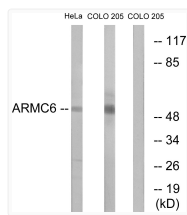
Gene ID	93436
Gene Symbol	ARMC6
UniProt ID	ARMC6_HUMAN
Immunogen Region	431-480 aa
Specificity	ARMC6 Polyclonal Antibody detects endogenous levels of ARMC6 protein.

ADDITIONAL INFORMATION

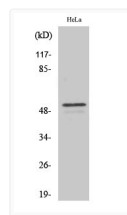
Note STRICTLY FOR FURTHER SCIENTIFIC RESEARCH USE ONLY (RUO). MUST NOT TO BE USED IN DIAGNOSTIC OR THERAPEUTIC APPLICATIONS.



Immunofluorescence analysis of A549 cells, using ARMC6 Antibody. The picture on the right is blocked with the synthesized peptide.



Western blot analysis of lysates from HeLa and COLO cells, using ARMC6 Antibody. The lane on the right is blocked with the synthesized peptide.



Western blot analysis of various cells using ARMC6 Polyclonal Antibody